

DECEMBER
2011



Romney Ramblings

Newsletter of the American
Romney Breeders Association

Special points of interest:

- Romney Marsh Part 2
- ARBA Sponsored Events
- Annual Meeting
- National Show and Sale
- Junior Shows
- Promoting Romneys

Inside this issue:

Director's Notes	3-4
Advertising Rates	4
Editorial	5
Happy Hauling	5
Association News	6
Culver Scholarship	6
Calendar of Events	7
Editor Needed	8
District 2 Report	9
Romney History	10-11
Junior Shows	12
NAILE Champions	13
National Show/Sale	14-15
National Show	16-17
NAILE Results	18
NY Sheep & Wool	19



ARBA President, Ron Andress



Emma Morton gets another sheep ready for the show ring. Junior and open shows have found Emma at the top of the line up this year.

President's Message

One of my favorite times of the year is finally here. Fall means breeding time. Our breeding season is a little different this year. We have had many multiple markings this fall. I think those 100 plus degree days in July took its toll on the rams. As I write to you, it seems most of our ewes are now closed. I look forward to next spring's lamb crop, although it will be a little later than normal.

Speaking of bad weather, the weather was not the best for our National Show and Sale. It was damp and humid. But what a great show and interesting sale we had. It was a pleasure to see so many wonderful Romneys in one place. Thank you to Anne McIntyre-Lahner for a great weekend and all her hard work!

During our Annual ARBA Meeting, our outgoing President, Cindy Ciecwa told us how well ARBA is doing in these tough economic times. Registrations, transfers and memberships are up in 2011. The future is bright for ARBA. I want to thank Cindy and the out-going board members, Chris Bazant, Margaret Walters, Dan Pence and Anne McIntyre-Lahner for all their hard work and years of service.

I also want to welcome our new board members, Charlene Carlisle, Vice President; Tracy Haslem, At Large; Willis Plank, At Large; Hilary Chapin, District 1 Director and Ed Julian, District 3 Director. The board of directors has met, organized and is ready to go to work for our membership and our Romneys.

ARBA will be 100 years old in 2012! We are planning a special celebration in Oregon. Then we will continue this celebration all across the country to commemorate our centennial. Watch for details that will be coming soon.

Ron Andress, ARBA President

SMILING SHEEP FARM

ROMNEYS THAT WILL MAKE YOU SMILE!

2011 NATIONAL ROMNEY SHOW AT THE BIG E
CHAPIN 20 RESERVE JUNIOR CHAMPION EWE
CHAPIN 30 RESERVE JUNIOR CHAMPION RAM
1ST PLACE GET OF SIRE



THANK YOU TO ALL OUR 2011 BUYERS

BRITTANY SHIPPEE
ANCHORAGE FARM
TIMOTHY WALKER
ETHAN KENNEDY
TOM CURREN
LARA KAZO

LOOKING FORWARD TO 2012
HILARY, WES, COOPER AND ELLORA CHAPIN
123 HARE ROAD MILTON, NH 03851
1-603-767-8826
WWW.SMILINGSHEEPFARM.COM

The History on Natural Colour Romneys you won't get off the internet



JK Korral

'87 Original NC ewes and ram (Buster - Culver 8807B) purchased from M. Culver
'88 Purchased Silver Creek 97-145 (Neiman Marcus) NC ram
'91 Purchased Springfield 869 (Willie) to develop B factor ewes with greater size
'99 Purchase of Bullock ewes, daughters of Meadowslea "Good As Gold"
'03 Purchase of NC ram Smith 9 (Oreo) for selected mauve/gray fleece color. Still in use at JK Korral.

Silver Creek Lambscapes

'86 Original NC ewes and ram purchased from Morris Culver
'87-'89 Purchase of NZ import rams and ewes from Aurora, Ram Hill, Tamlet, Gatton Park, Tresco, Bracken Hills; which became base of colour line.
'89 Attended World Congress on Colour Sheep USA
'91-'93 AI with NZ Leedsvale 1302-87, NC
'93-'94 Use of Humble Hills 8-91 NZ import, NC
'97-'99 AI with NZ Monuina 109-94, NC
'02-'05 AI with NZ Woolyn 6-97, NC
'05 to present Use of combinations from AI and NC stock from JK Korral.

Complete Natural Colour Romneys from Silver Creek and JKK— "The whole package", No birth photos needed. Just 25 years of PURPOSEFUL recessive breeding with selection for outstanding natural colour Romneys with honest pedigrees, frame size, superior wool and classic breed type.



JK Korral (541-476-6428)
744 Riverbanks Road
Grants Pass, OR 97527
jkkorral@qwest.net

Silver Creek Lambscapes (503-480-9455)
6731 Torvend Road N.E.
Silverton, OR 97381
Kendal@teleport.com

Rambling Roads ~ Notes from District Directors

District One—New England

Greetings from New England—where we are digging out from an October northeaster that dumped two feet of snow! As if our last two months of rain wasn't enough great weather! My Romneys don't seem to mind, so maybe I should follow their lead.

I am Hilary Chapin, your new District 1 Director. I first want to thank Anne McIntyre-Lahner for putting together a great National Show and Sale. ARBA held its 2011 National Romney Show and Sale at the Big E in September. Although the weather was miserable, the Romneys were smiling! We started the weekend with some great educational talks by Margaret Howard and Dee Heinrich. The food and the company were great at the annual banquet and meeting. A successful silent auction was held to benefit the Morris Culver Memorial Scholarship Fund.

After a VERY long, but fun day of showing, the day finally ended with the National Sale at 8:00 p.m. Though the sale could have produced a few more buyers the sale average was \$458 on 25 lots. If you would like detailed information on the show and sale results you can go to www.thebige.com and www.bannersheepmagazine.com

It was a beautiful thing to see Romney breeders from coast to coast and so many great Romneys in the ring. To those of you that made the trek across country, thank you! Every time I speak with a fellow breeder it seems like I learn something new. Our shows, sales and festivals are a great place to share knowledge and build friendships, which only help our Romneys to get even better! We ended the weekend with a trimming demo and pizza party for our junior members. They even went home with some great new ARBA sweatshirts!

I would encourage the district 1 members to contact me with any ideas, questions, etc. My goal is to serve you and our Romneys to the best of my ability. I love to talk sheep! Please call or email me anytime. By now all your ewes are happily bred, and if you're like me you can't wait to see those lambs!

Hilary Chapin, District 1 Director
123 Hare Road
Milton, NH 03851
603-767-8826
hwchapin@hotmail.com

District Two—East

See our district article in the junior show section of this newsletter. Send any additional information regarding your Romney sheep and wool experiences to me for the next edition.

Michelle Reilly
4614 Locust Grove Road
Rohrersville, MD 21779
reillymichell60@hotmail.com
301-432-2009

District Three—Central

I want to commend everyone who supported our National Show and Sale by exhibiting their Romneys. As they know, it doesn't just happen. It requires spirit, courage and determination to expose their animals to the sometimes critical and discerning world. It is much easier to sit on the sidelines and scrutinize the results of breeders' hard work and sacrifice than to exhibit at shows throughout the country. It is interesting to see and evaluate animals from breeders from different parts of the country and the different ideals they are aspiring to reach. Also, a big thank you to JoAnn Mast for helping connect both coasts by hauling sheep back and forth to our National event.

By the time this will be printed, the last major show of the year will be history. The North American International Livestock Exposition is an excellent venue to showcase the Romney breed to a National audience. From early indications we expect a strong showing from the junior Romney members from several states. The junior showmanship classes have been changed this year to allow competition by age group instead of just within each breed. I am confident the junior Romney showmen will be very competitive against junior showmen from the other breeds. Adequate numbers are expected for the open Romney show with John Mrozinski as judge. A live webcast of all the shows can be seen by connecting to the NAILE website.

Ed Julian, District 3 Director
3009 St. Rt. 44
Rootstown, OH 44272
330-325-9150
ejulian@neo.rr.com

District Four—Oregon

Greetings from Oregon! I helped out Randy Thompson, our District 5 Director, with a new endeavor in May. We represented ARBA with his Romneys at the first Mother Earth symposium in the Northwest. This was held at the Puyallup fairgrounds in Washington. The attendance for the two days was over 20,000 people. The interest for Romneys, for their wool and meat quality was highly sought after. We had other long time growers of Romneys also participating with us, Al and Lin Schwider put on a wool demonstration using Romney wool. They had lots of young people try

Al's spinning wheel for their first time.

It's been an extremely busy summer with the normal ups and downs. We started off with the Black Sheep Gathering in Eugene, Oregon in June and finished up with the Oregon State Fair at the end of August, with many county fairs that we participate in between. I want to congratulate all of the different individuals that have shown their Romneys this summer in the different fairs and fiber shows around the state of Oregon. I want to really thank and encourage the youth to keep up all of their hard work at the different fairs showing their Romneys in 4-H, FFA and open class events.

I would like to say howdy to all those fantastic Romney breeders I met while attending the National Romney Show, Sale and Annual Meeting at the Big E in Massachusetts. The warmth and hospitality of the east coast folks was wonderful and most appreciated. You are a super bunch of people with some exciting ideas! Promoting Romneys is the main goal and it is nice to know that we are all working to promote them together.

I'm looking forward to seeing everyone at the Oregon (District 4) Regional Show in 2012, and don't forget that it is the 100th Anniversary. If anyone would like to help out on any of the committees needed for the show, please contact me as soon as possible.

Scott Culver, District 4 Director
3455 N.E. Granger Road
Corvallis, OR 97330
Scott.culver@oregonstate.edu
541-231-3398

District Five—West

The life of a Romney breeder is never slow or quiet. It seems there is always a list of chores no matter what time of the year it is. Out here in the Northwest we seemed to have gotten a small reprieve in summer with green grass and mild temperatures that lasted all the way into September! But now the leaves are changing, the rain is back and breeding season is well underway. Lambing will be here before we know it, so it's time to start checking if our barn and equipment is ready for the new arrivals.

I hope you had the opportunity to participate, watch or support a sheep show. It is important to impress upon the fair officials that interest in agriculture is not waning in this technological age and that Romney breeders are alive, Continued page 4

District Five—continued

well and interested in showing their animals. After many years I made the decision to venture east of the Cascades and include entering my sheep at the National Show at the Big E. I was amazed by the facility and immediately at ease with the friendly people. I have a new found appreciation for our friends in the northeast who have to contend with 80 plus degree heat and humidity to match. It made fitting the sheep difficult for anyone not use to dealing with it. I am sure my sheep were as uncomfortable as I was and anxious to get back to a climate they were used to.

I would like to congratulate Sydney McBride in winning the Morris Culver Scholarship for 2011. All of the applicants were exceptional and I was proud to hear that a member of District 5 won. Sydney has a great future ahead of her. Giving children the opportunity to raise Romneys is a positive experience which builds character and discipline and prepares them for the future.

Randy Thompson, District 5 Director
4004 50th St. Ct. E.
Tacoma, WA 98443
(253) 926-8150
Randy@BPFarms.com

District Six—South

Hello to all from the Southeast. The coming of fall has finally blessed us with cooler temperatures. It seems that our weather is either too wet, too dry or too hot. These extremes create quite a challenge when trying to grow beautiful Romney fleeces. Thankfully the customers keep coming back for more.

Fall always brings the excitement of our state fairs and for us it's the North Carolina Mountain State Fair in September and the Southeastern Animal Fiber Fair in October.

This year there were 28 Romneys exhibited in the junior show at the NC Mountain Fair, and amazingly done by only three exhibitors. It's time to start recruiting new juniors as most of ours have aged out of the junior division. Montana Newell and ewe Pegasus won the Grand Champion Junior Ewe and Grand Champion Junior Fleece. Seth Taylor and ewe Halo won Reserve Champion Junior Ewe. A pair of Romney cross ewe lambs, Polly and Pickles, exhibited by Matthew Petrick, won Grand Champion Junior Pair and Pickles won Grand Champion Homegrown lamb. There was

a tie for the first time for Premier Romney Exhibitor between Montana Newell and Matthew Petrick.

The Open Show at the NC Mountain State Fair was dominated by Katie Hacker from Indiana. Katie exhibited the Supreme Champion Ram and Supreme Champion Ewe. Seth Taylor won the Romney White Fleece class with Nellie and Romney Natural Colored fleece class with Joy. The Petrick's Romney cross ewe lambs, Polly and Pickles, won Supreme Champion pair.

The Southeastern Animal Fiber Fair, held the fourth weekend of October each year, was attended by more than 6,000 fiber enthusiasts. The three day event had 140 plus vendors and classes filled to capacity each day. The sheep show was well attended by Romney exhibitors, unfortunately the show results were not available.

Continue to send information to me from our district. It will be used in upcoming issues and help support the efforts of Romney breeders in District 6.

Becky Petrick, District 6 Director
1533 Cat Square Road
Vale, NC 28168
bpetrick@vol.com
828-308-0234

Advertising in the 2012 Romney Ramblings

If you plan to place ads in the Ramblings in 2012, why not make payment now for three editions and receive your 15% discount? See the pricing on page 6 and send your payment to the Ramblings editor. Your ad can be updated for each edition, but payment for the three editions needs to be done in advance. If you have paid ads remaining from 2011, why not add to them with the three issue purchase? This will help secure your spot in the newsletter and help make tracking of payment much easier for the editor.



The Pines Farm

Raising only Romney
sheep for over
30 years

A big "Thank You" to our 2011
buyers from across the country



2009 National Romney Show
Grand Champion Ram

Al and Lin Schwider
Maple Valley, WA
425-432-3455
thepinesfarm.com

2011 National Romney Sale
Grand Champion Ram

Happy Holidays,

Perhaps not what you were thinking, but it is that time of year. It is also the time of year for colder weather, higher feed bills and the arrival or anticipation of arrival of new lambs. We are working toward getting the ewe flock shorn and the straw a bit deeper in the barns.

For those of you fortunate enough to figure out illness a bit speedier than I, you will appreciate my taking a few days away from the Ramblings to have my gall bladder removed. Apparently not

all severe gastric issues are classified as stomach flu! After feeling miserable for nearly three weeks, I made the trek to the hospital. Within a matter of minutes they had diagnosed the problem and I was placed on ice chips and a drip bag that contains more calories than any food I normally eat. If the content of that bag could be added to creep feed, our lambs would be doubling in size quite rapidly. Five days of lounging around in the hospital was a great weight gainer for me and the last 24 hours were quite productive because I had the phone and the num-

ber to dial for food. It just arrived, as ordered, and all was consumed.

I was pleasantly surprised at the modern blend of drugs used for general anesthesia. The last time I had that method of sedation, it lingered for about 36 hours and with each waking you could experience another round of nausea. A big change in the right direction from my point of view.

I hope you all have a great winter and come through it without major setbacks, both personal and with your sheep. JoAnn

Making Your Sheep Hauler Happy!

If you send sheep across state, or further, with someone offering to haul your animals, take time to consider making that a positive experience for you, the sheep and the hauler.

Having your sheep prepared for travel is very important. If they can be shorn, that helps. If they have not had a recent clostridial combination vaccination (5-way, 7-way or 8-way), prior to departure is a great time to do this. If they have been exposed to an infectious disease (respiratory, sore mouth, foot scald, etc) since the health certificate was written, do not send them on the trailer. Many times sheep are shipped to individual buyers with animals going to shows and sales. The transfer of disease to these animals is not very convenient.

Make sure you know what your responsibility is for providing feed. It may be that nothing is required, or that a bale of hay would be expected. Not many haulers are going to feed grain, so

don't be expecting an individual feed trough with a personal feeding while on the road.

Having animals ready for loading or unloading is a big help. If it takes an hour or more to position the trailer, sort the sheep, catch them and hand load them on the trailer, you may find the hauler is looking a bit less enthusiastic toward completion of the task.

Be realistic about where you expect a truck and trailer to maneuver. Down the driveway, around the panels, backing between shrubs and trees (with your mirrors pulled in) is not always the best way to start the loading process. Most sheep can be moved close to the road and confined in a pen made of portable panels. One hog panel can make a great pen that can be moved and can also be moved with the sheep in it.

Take the driver seriously when he or she says that it is not likely that getting to and from

the area where your sheep are penned is possible. A tow truck that can pull a truck and loaded trailer out of a mud hole can add to the cost of transport quite substantially.

If you are meeting the hauler at a freeway exit or in a parking lot, be specific about the location. Many of the haulers are entering this location for the first time, and the more information you can provide, the better. Having contact by phone, using exit numbers and landmarks are all quite helpful, as is a set of emergency flashers serving as the beacon to guide you off the road.

If sheep are being delivered to a show or sale, where they must be moved from the trailer to pens, make certain these animals are halter trained. Sheep that can be caught in the trailer and moved to a trailer, pen or field are much easier to haul than those that circle, shove and run over the person trying to unload them. JoAnn Mast

Contact Information For American Romney Breeders Association

Ron Andress, President

538 Geigel Hill Road
Ottsville, PA 18942

president

@americanromney.org
(610) 847-5419

Charlene Carlisle

Vice President

510 Centerton Road
Moorestown, NJ 08057
vp@americanromney.org
856-866-1747

Carol Pasheilich

Director At Large

935 Lichens Road
Montague, CA 96064
tawandafarms53@att.net
(530) 459-0966

Tracy Haslem

Director At Large

23627 N.E. 57th Ave.
Battleground, WA 98604
nvfilly@aol.com
360-607-8784

Willis Plank

Director At Large

2871 W. Hallett Road
Hillsdale, MI 49242
517-437-2984

Christiane Payton

ARBA Secretary/Treasurer
12775 N.W. Oak ridge Rd.

Yamhill, OR 97148
secretary@
americanromney.org
(503) 662-4249

Associated Sheep Registries

Karey Claghorn, Registrar
15603 173rd Avenue
Milo, Iowa 50166
(641) 942-6402

Romney Ramblings Editor

JoAnn Mast
58221 Lee Valley Road
Coquille, OR 97423
soromney@wildblue.net
(541) 572-3094

Your Name Could Replace
This One!

Using the Romney Yahoo Groups

To become actively involved with the Yahoo Groups, use the following information to get started. Mary Pratt is the contact person for the general Romney group.

Her email: elihufarm@localnet.com Group site: romneysheep@yahooogroups.com

Maggie Howard is the contact for the recessive group.

Her email: tawandafarms53@att.net

Group site: Romneyrecessivecolor@yahooogroups.com

Romney Ramblings

The Romney Ramblings is the newsletter of the American Romney Breeders Association. The purpose of the Ramblings is to provide sheep industry news, highlight the efforts of ARBA, announce events and activities, provide an outlet for promotion of your sheep and wool products and recognize the accomplishments of the membership.

Advertising in the Ramblings

Prices: color - black & white

Full Page	\$150	\$75
1/2 Page	\$90	\$45
1/3 Page	\$70	\$35
1/4 Page	\$50	\$25
Card Ad	\$25	\$12

Classified Ads—45 cents per word.

Above rates are based on camera ready copy, sized to fit the space purchased for the ad. Ads prepared by the editor will be charged at \$15 per hour, with a minimum fee of \$15.

Send all advertising information and news to: JoAnn Mast

58221 Lee Valley Road
Coquille, OR 97423
(541) 572-3094
soromney@wildblue.net

From the Secretary's Desk

This is always a hectic time of year in the Payton household. First Halloween, then Thanksgiving and finally Christmas are enough to put this mother of four school age children into a tizzy that makes Mary Poppins look like a slacker. In fact, the only place I get some rest and relaxation, is in the barn. The ewes are bred, the rams are bored and lambs from this past year are growing. The hay and alfalfa stacks are still reasonably large and the bedding has yet to turn into an eyesore. After I feed those final flakes of hay in the evening, I sometimes sit down and listen to the sounds of happy munching. One of the reasons I like raising sheep is that they always eat their dinner. Nobody raises their head from the feeder and says "I wanted noodles". They just eat their food and are content.

I hope that this note finds you and your families well. I'm sure that many of us are already looking forward to next year's lamb crop. If one can get around the increase in feed prices, it's a good time to be raising sheep in general and Romneys in particular. In 2012, we celebrate ARBA's 100 year anniversary. Check out the association's website in the months to come as we will be announcing a competition for designing a centennial anniversary emblem as well as other activities for the new year. I wish you all a good winter and great success in the barn at lambing.

Christiane Payton
Yamhill, Oregon

Membership Renewals—Important Change

Going forward, our membership renewals and new membership applications will be processed by ASR. This means that all forms and checks for registrations, transfers and membership renewals/new memberships get sent to Iowa. To help with this process, you will find a membership renewal form and addressed envelope in this issue of the Ramblings. ARBA's membership renewal period runs from November 1 through January 31. So don't delay! Please send your membership renewal form in and don't forget to include your contact information and the number of sheep you own. Feel free to contact ARBA secretary Christiane Payton, secretary@americanromney.org or 503-662-4249, with any questions.

Morris Culver Memorial Scholarship Winner

The 2011 Morris Culver Memorial Scholarship has been awarded to Sydney McBride from Hobart, Washington. Scott Culver made this announcement during the ARBA annual meeting held at the Bid E on September 23, 2011. Sydney is attending Iowa State University, studying agriculture meteorology. Congratulations to Sydney!

Thanks to Tawanda Farms and Windy Oaks Farm for their two donated lambs in our National Sale. All proceeds from these lambs were given to the Culver scholarship fund. Buyers for the Windy Oaks entry were Katherine Moore and Glen and June Brooks. The Tawanda Farms lamb was purchased by Dee Heinrich. Thank you to all bidders and buyers for your support.

This year we received the most applications to date for the award. Our youth are excited about this scholarship. Now, more than ever, we need everyone's help to grow this scholarship fund into something that can sustain itself into the future. Please remember this fund in your estate planning and send donations to the ARBA secretary.

Yahoo Groups Offer Discussions

We are fortunate to have two informational internet lists by ARBA members. Topics on the Romney Sheep list include health, management, nutrition, transportation and much more. On the Romney Recessive Color list you will find discussions on color patterns, fiber soundness, breeding strategies and the science of our natural colored sheep.

Check these lists out, but please remember that ARBA does not sanction, support or control the content found there. ARBA board members may from time to time enter into the discussions. They do this as an individual and express their opinions, not those of ARBA.

Ron Andress, ARBA President

Planning On Doing AI?

Before you commit to artificial insemination of your ewe flock, obtain the ARBA registration number on the ram you select. Also be sure to send in to the ARBA office the transfer to you of the breeding units. For further information and assistance, read the information on the AI page and contact your ARBA secretary at secretary@americanromney.org.

Synchronizing Breeding With CIDR Device

Articles in the Oct/Nov issue of The Banner Sheep Magazine and November issue of Shepherd magazine discuss the use and benefit of controlled internal drug releasing (CIDR) devices. Information is presented from research conducted in Virginia and West Virginia, and stresses the ability to achieve spring breeding. Articles also focus on the rate of success when using CIDRs.

December 2011

- 1-3: Oregon Sheep Growers Assoc. annual meeting. Sunriver, OR. Contact Richard Koesan 503-364-5462, rkos@rdkcompany.com.
- 2: Missouri Livestock Symposium, Kirksville Middle School. Kirksville, MO. www.missourilivestock.com
- 2-3: Montana Wool Growers Assoc. annual meeting. Billings, MT. Contact Jack McRae 406-442-1330. mwga@mtsheep.org.
- North Dakota Lamb & Wool Producers Assoc. annual meeting. Mandan, ND. Contact Wyman Scheetz 701-794-8743. wscheetz@westriv.com
- 2-4: Minnesota Shepherd's Weekend, Jackpot Junction, Morton, MN. Contact Jeremy Geske 952-758-7938. geske@mlwp.org.
- 3: VSPA Fall Bred Ewe & Doe Sale, Rockingham Co. Fairgrounds, Harrisonburg, VA. www.vasheepproducers.com/
- Tennessee Sheep Producers Assoc. annual meeting. Lebanon, TN. Contact Ben Powell, 615-237-0300 or benthomaspowell@gmail.com
- 3-4: Mt. Bruce Station's Christmas Weekend, Romeo, MI. www.sheepstuff.com
- 5: Pre-Lambing Shearing School, West Virginia University. Keith Inskeep. 304-293-1936. einskeep@wvu.edu.
- 7-9: Shearing School. Brookings, S.D. Jeff Held. 605-688-5433. jeffrey.held@sdstate.edu
- 10: Buckeye Shepherd's Symposium, ATI, Skou Hall, Wooster, OH. Contact Roger High 614-246-8299, www.ohiosheep.org.

January 2012

- 7: Virginia Sheep Producers Assoc. annual meeting, Blacksburg, VA. Scott Greiner 540-231-9163. sgreiner@vt.edu.
- 7-8: Michigan Shepherd's Weekend, Lexington Hotel, Lansing, MI. www.misheep.org. Pat Tirrell 517-543-7395 tirrellpat@hotmail.com
- 11: Illinois Certified Livestock Manager Training Workshop. Simpson, IL. web.extension.illinois.edu/lmw/findus.html

- 14: Kentucky Small Ruminant Grazing Conference. Bowling Green, KY. David Ditsch 859-257-9511. dditsch@uky.edu.
- 25: Vermont Sheep & goat Assoc. annual meeting. Barre, VT. Jane Woodhouse 802-592-3062. jane.w@fairpoint.net
- 25-28: ASI/NLFA Annual Convention, Scottsdale Plaza Resort, Scottsdale, AZ. www.sheepusa.org. 800-832-2025.
- 26: Illinois Certified Livestock Manager Training Workshop. Quincy, IL. 217-223-8380. web.extension.illinois.edu/-abhps/findus.htm

February 2012

- 2-4: Utah Wool Growers Association annual meeting. St. George, UT. Doug Livingston. 801-362-4854. drlivingston8@gmail.com
- 4: Indianhead Sheep Breeders Shepherds Clinic. Indianhead Technical College, Rice Lake, WI. www.indianheadsheep.com
- 20: Illinois Certified Livestock Manager Training Workshop. Sycamore, IL. 815-758-8194. web.extension.illinois.edu/-bdo/findus.html.

March 2012

- 10-11: Shearing School, Cornell Teaching & Research Center Sheep Farm, Hartford, NY. Doug Rathke. 320-587-6094. lambshop@hutchtel.net
- 14: Shearing School, Jefferson City, MO. Vonna Kesel. 573-681-5312. keselv@lincolnu.edu.
- 17: 2012 Spring Fiber Sale in Oregon City, OR. eveline@springfibersale.com or www.springbiersale.com
- 16-18: Beginner Shearing School. Montana State University, Red Bluff Research Station. Peggy Kelley. 406-994-3415. kelley@montana.edu
- 31: High Desert Wool Growers annual fiber market day. Prineville, OR. www.hdwoolgrowers.com
- May 5-6: Maryland Sheep & Wool Festival www.sheepandwool.org
- 13-18: All Things Fiber Camp, Rhinebeck, NY. www.allthingsfibercamp.com
- June 22-24: Black Sheep Gathering, Eugene, OR. www.blacksheepgathering.org



3723 Beaver Valley Rd.
Port Ludlow, WA 98365
(360) 732-4856

White & Natural
Colored Romneys

Quality Breeding Stock available based on 30
years of Romney breeding with top bloodlines
including Judah, Bullock, Schwider & Pin Oak.

“Visit us at Shepherd’s Extravaganza and various
northwest shows.”

margaret@springhillromneys.com

www.springhillromneys.com

New Ramblings Editor Needed!

After many years as the Ramblings editor, JoAnn Mast is stepping down and we need someone to fill these rather large shoes! The job is multi-faceted and includes the following responsibilities:

- soliciting information from Board members and advertisers
- locating educational/informational articles on the web or in industry newsletters
- collecting show results from websites and exhibitors
- working with the ARBA secretary to print labels and coordinate the mailing of the membership reminders and directory
- layout, proof reading and editing
- printing and mailing the Ramblings

If you have experience in publishing and are a good team player, this might be a fun job for you. Please submit a letter of interest, including a resume, to:

ARBA
12775 NW Oak Ridge Rd.
Yamhill, OR 97148
ATT: Ramblings editor application

Please tell us about yourself and what special skills you bring to the table—applications will be reviewed by the ARBA Board.

There is a small amount of monetary compensation for the job of Ramblings editor, in the form of a flat fee per issue.

Little Hooves Romneys

White & Natural Colored Breeding Stock

The Carlisle Family

510 Centerton Road 856-866-1747 (home)
Moorestown, NJ 08057 609-760-0399 (cell)

www.LittleHoovesRomneys.com

E.mail: ccshep1@aol.com

2011 Show Results

NYSWF (Rhinebeck): CH NC Long Wool Ewe, 1st Place NC Yearling Ewe, NC Junior Ewe Lamb and Pair of Ewe Lambs

NAILE: White Division ~ CH & RC Ram, 1st Place Winter Ram Lamb, Spring Ram Lamb, Pair Rams, Pair Ewes

NATIONAL SHOW: White Division ~ CH Junior Ram, Top Breeder’s Flock and Premier Exhibitor

Watch for our entries at sheep events in 2012.

Julian and Moore Sheep Co.

ED & HELEN JULIAN

WHITE AND NATURAL COLORED
ROMNEY SHEEP

3009 SR 44 · Rootstown, Ohio 44272

(330) 325-9150 · FAX (330) 325-0224

Email: ejulian@neo.rr.com

Cell (330) 338-4793



PITCHFORK RANCH

*PFR 584 – 2010 Ram Lamb
Supreme Champion White Ram
Best White Long Wool Fleece
2010 New York State Sheep and Wool Festival*

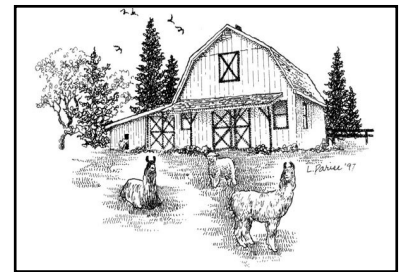
*Supreme Fleece Sheep
2010 Mountain State Fair*

For conformation, fleece and true breed type,

“Stick a little Pitchfork in your flock!”

Now taking reservations for 2012 lambs

PITCHFORK RANCH
CINDY CIECIWA • MARGARET VAN CAMP
SWARTZ CREEK, MI
PITCHFORK@USOL.COM
WWW.PITCHFORK.ORG
810-655-4091



Washington State 4-H Sheep Show

Travis Haslem had the Champion 4-H Romney Ewe and Reserve Supreme Champion Ewe in the 4-H division at the Washington State Fair in Puyallup. This is a ewe Travis raised. He also had the Champion 4-H Fleece with his Romney fleece.

District 2 News

On a warm September day, my husband Bob, grandson Caleb, and I set off for the Great Frederick, MD Fair with our Spartan assortment of fitting equipment and five sheep. Our goal was to support the several 4-H kids that we had sold sheep to and to have some fun at the fair with Caleb. Here in Frederick County, we are fortunate to have a good wool show with a Romney class. People from several counties and states come here to show, representing many wool breeds.

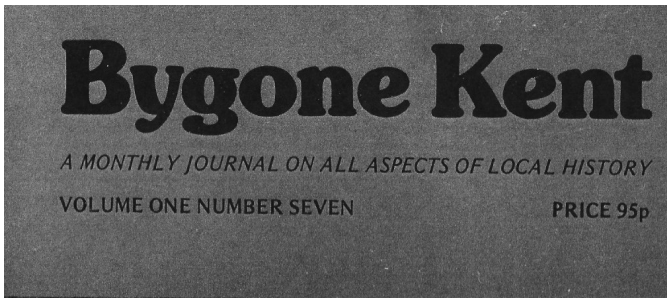
Show time finally came and the sheep were ready. The judge for the show was David Cook, a respected wool judge who has judged a the MD Wool Festival. He placed our ram lamb as champion and our yearling ewe as champion ewe. He questioned us about the blood lines in our sheep and remarked on our “big, bold fleeces”. Then we happily settled in to enjoy watching the rest of the breed shows.

When it was time for the Supreme Champion ewe to be judged, our ewe bucked and

refused to let us set her feet. Mr. Cook had narrowed his choice down to two, with our bad girl being one. It was then that he did something which I have never seen done before. He stopped the show, had me take my ewe into the barn and turn her loose in a pen. He watched as sheep freely walked around the pen. I took her out, and the other ewe was put in the pen and observed. He then had us return to the ring. I was unsure about what had happened, but Mr. Cook shook my hand and gave Caleb the Supreme Champion banner. At that moment I was truly proud to have a Romney win the Supreme Champion award. Romneys got the attention they deserve as top quality sheep. Now when people ask how we did at the fair, we tell them that it couldn't have been better. We hope this account will encourage others to show and enjoy their Romneys. Jean Gale Jefferson, Maryland Catocin Creek Farm



Part Two: History of the Kent or Romney Marsh Sheep



District 1 Members at Big E



Ellora Chapin takes part in the Lead Line Class during the Big E. Her Romney ewe lamb helped with the success of her entry in this class.



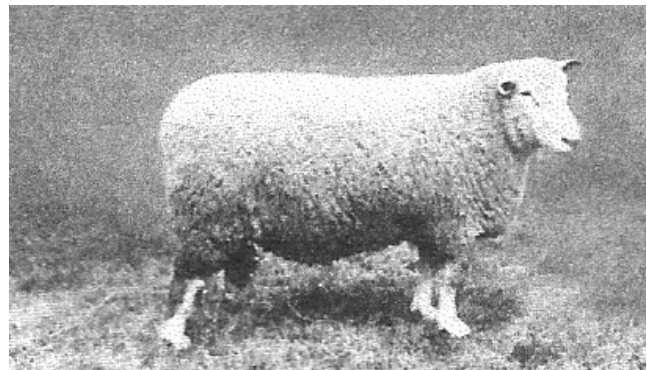
Left: Brittany Shippee of North Scituate, RI shows off her new ram lamb purchased from Thompson Romneys. Right: Hilary Chapin and her Smiling Sheep Farm ewe lamb participate in the Lead Line Class.

Unfortunately there seems to be very little documented evidence of the early days of Owling so it is rather amazing to discover that right in the heart of the Customs House with the title, 'The Comptroller of the Customs and Subsidy of Wools, Skins and Leather' between 1374 and 1386 was none other than Geoffrey Chaucer, one of the greatest writers of the day, but he hardly wrote a word on the subject although he does mention a wool merchant in 'Canterbury Tales'. However, it is recorded that in 1376 he caught John Kent illicitly exporting a cargo of wool and as was the custom of the day, he was entitled to keep the fine imposed for himself.

Under the reign of Mary, Elizabeth and James I, wool export duty was around one pound, thirteen shillings and sixpence per sack and after the restoration in 1660, wool export was totally prohibited.

In 1662 illegal export was made punishable by hanging, but Owlers or 'Free-Traders' as they then styled themselves were not deterred. So successful were they in exporting their own wool that they become wool merchants as well by buying in wool from the Weald further inland. In 1688 it was recorded that at shearing time fleeces were openly carried on pack horses across the Romney Marsh by armed gangs in broad daylight. Ten years later a law was passed forbidding anybody living within 15 miles of Kent and Sussex coast to buy wool until they had made an agreement that none would be sold to any other person living within 15 miles of the sea. Sheep farmers living within ten miles of the coast had by law to account within three days of shearing for the number of fleeces and their whereabouts, but it would appear that the Marsh folk treated the new Act with contempt. It was difficult to conceal the bulky wool bales on the flat Marsh and so daring methods had to be used for concealment and churches were often used, possibly with the tacit consent of the Ministers. Notwithstanding the laws, the trade developed further and at one time some 40,000 packs of wool from Kent and Sussex were landed at Calais within two years. There was of course opposition from the Revenue Men, but they stood little chance against the Kentish inhabitants, most of whom were in complete sympathy with the Owlers. They felt that the Kent Wool Growers were being unreasonably hampered by prohibitive and unjust laws and some feel that it is not until comparatively recently that there has been any legislation helping the actual wool growers.

Inventories reveal that at the beginning of the 17th Century, the Romney Marsh sheep flocks were three times larger than flocks in any part of Kent, with the exception possibly of the Isle of Sheppey where even there the sheep were probably originally bred on the Marsh. Towards the end of the 17th Century



they increased even more thus making Kent one of the chief wool producers in England.

Owling continued right through until the Napoleonic war of the early 19th Century, when the permanent Romney Marsh pastures were reduced.

Many centuries of sheep farming together with fishing were the traditional industries of the area making an ideal combination for Owling. The human population however was rather erratic for in the middle of the 17th Century the village of St. Mary in the Marsh contained no more than 50 people, mainly 'Lookers' – that is another Kentish colloquialism for sheep minders or shepherds on the Romney Marsh area. William Cobbett who rode across the Romney Marsh in September 1823 writes of the church at Snargate, "Having capacity to hold a congregation of 2,000, whilst there are only 5 houses in the whole area".

Over the years the Romney Marsh breed was improved and even Cobbett was impressed when he first saw Romneys: "The wool is not greasy like that of other sheep" he wrote, "Indeed the fleece is as white as a piece of writing paper."

Until the latter half of the 18th Century, graziers let the grass grow long, but at this period, it was discovered that sheep do not require a long bite and more sheep were introduced to keep the grass closely cropped, a policy that is continued today. The best test for well managed Romney Marsh fattening pasture it is said is to, "Throw a sixpence as far as you can and if it is easily found the pasture is well managed – if not it is under-grazed."

At the beginning of the 19th Century attempts were made to improve growth by the introduction of Leicester rams which met with some resistance from the local graziers. Towards the middle of the 19th Century crosses with Lincoln and Cotswold rams were tried but the crosses were unsuited to the hard winters and early Spring conditions of the Romney Marsh and all traces of the cross were rapidly eliminated.

In the 20th Century during both wars flocks were reduced to enable milk and cash crops to be produced and by 1945 flocks were half the 1900's size and today only 30% of the Marsh is permanent pasture. Over the last 200 years emphasis on sheep production has gradually changed from wool to mutton and from mutton to lamb and today the wool, although still important, is secondary to the production of fat lambs.

No other breed has satisfactorily withstood the exposed and bleak Marsh conditions, but it is because of these conditions that the breed has gained its tough constitution. The Romney has a large heavy body on short legs with white face, black nose and hoofs, large white prominent eyes and a wide head level between the ears with a top-knot on the hornless forehead. It is resistant to foot rot and liver fluke and can endure a wide range of temperatures and weather conditions including intense cold. Like many early breeds the sheep has a long hair fleece, the wool being denser and finer than that of most other breeds of long wool British sheep and high quality fleeces are used for hosiery, hand knitting yarns, blankets and carpets. Another feature of the breed is that instead of bunching together it is their habit to spread out evenly giving the Marsh fields an

impression of being mown, thereby making the best use of pasture. Like most long wool breeds the Romney is not a prolific breeder, the average crop being 115 to 120 lambs from every hundred ewes put to the ram. Traditionally the rams are put out on the 5th November for the main lambing season to take place at the beginning of April. Often it is crossed with South Down or Dorset to produce Kent Half Breeds and also with other breeds especially for fat lamb production. Kents are also common in the Weald where the heavy clay defeats drainage.

In May and June before the hottest part of the Summer, but when the sheep can lose its wool fleece without catching cold, shearing takes place and shearing on the Marsh is as important as the corn harvest is elsewhere. The sheep are rounded up into hurdled pounds by the Looker and his indispensable dog. The Looker usually trains his own dog taking about six months and it is a spectacular sight to see the ever alert dog assembling the huge flocks, never actually touching the sheep and guided by a few whistles or an un-meaning word or two from the shepherd which are the four basic commands of to the left, to the right, forward and stop.

The 10th of June is a popular date to start shearing but often delay is caused due to rainy weather as it is essential that the sheep are sheared with a dry fleece. In earlier days this was even more difficult when it was the common practice to wash sheep prior to shearing because it meant that the sheep had to be left for several days to dry out.

There is probably a higher proportion of sheep shearers on Romney Marsh than anywhere else in England and regular shearing competitions are held. During shearing season every farm hand who can handle clippers is used and on large farms travelling bands of contract shearers are often employed. In 1906 when shearing was generally carried out with hand clippers, the rate of pay was two shillings and sixpence per score and a good shearer could shear 40 to 45 sheep per day. Mechanical shears with a direct belt or friction drive working on the principle of a cutter with three teeth running from side to side over a flat cone are almost universally used on large farms and in earlier days before a source of power was to hand, the shearer had to have an assistant to turn the handle to operate the mechanical shears. The hand shears with a spring arced handle whose shape has hardly changed for centuries are rarely used for shearing, but are still frequently used for the 'dagging' or 'clatting' which is the clearing of the soiled wool from the hind-quarters. The dags make splendid fertiliser for the garden and are often put at the bottom of trenches dug for runner beans, sweet peas etc. Many shearers and shepherds can still use the hand clippers, but they are now usually reserved for special clips or for show purposes, apart from a few smallholders who only have to shear two or three sheep. The countryman still holds onto the hand shears even if they are no longer used on sheep for they have scores of uses in the garden and allotment including grass trimming and even hair cutting. The hand shears were slow to lose popularity even after the introduction of the mechanically operated shears because they did not cut as

NAILE Junior Show Results

Senior Ram Lamb: Kristin Loughman, Colby Clark
 Junior Ram Lamb: Ethan Kennedy, Kristin Loughman, Cameron Snyder
 Best Fleeced Ram: Kristin Loughman
 Yearling Ewe: Emma Morton, Bridgette Eldridge, Kaitlin MacIntyre, Ethan Kennedy, Kaitlin MacIntyre, Ethan Kennedy, Kristin Loughman, Kristin Loughman
 Senior Ewe Lamb: Emma Morton, Gregory Rogers, Colby Clark, Gregory Rogers, Kristin Loughman, Cameron Snyder
 January Ewe Lamb: Gregory Rogers
 Junior Ewe Lamb: Ethan Kennedy, Cameron Snyder, Ethan Kennedy, Cameron Snyder, Megan MacIntyre, Gregory Rogers, Kristin Loughman, Megan MacIntyre, Gregory Rogers
 Best Fleeced Ewe: Emma Morton

National Romney Show ~ Junior Results

The following placings are based on position in the open show competition, not a separate junior exhibition.

WHITE ROMNEY SHOW
 Intermediate Ram Lamb: Emma Morton, Emma Morton
 Junior Ram Lamb: Ethan Kennedy
 Pair of Ram Lambs: Emma Morton
 Junior Show Champion Ram: Emma Morton
 Yearling Ewe: Emma Morton, Emma Morton, Megan Higgins, Ethan Kennedy, Ethan Kennedy, Brittany Shippee, Brittany Shippee
 Pair of Yearling Ewes: Emma Morton, Ethan Kennedy, Brittany Shippee
 Overall Champion Senior and Junior Ewe: Emma Morton
 Grand Champion and Res. Gr. Champion Ewe: Emma Morton
 Intermediate Ewe Lamb: Emma Morton
 Junior Ewe Lamb (class 1): Ethan Kennedy, Emma Morton, Ethan Kennedy, Megan Higgins, Megan Higgins
 Junior Ewe Lamb (class 2): Ava Marie Raughley, Brittany Shippee, Brittany Shippee, Timothy Walker
 Pair of Ewe Lambs: Emma Morton, Ethan Kennedy, Megan Higgins, Brittany Shippee
 Exhibitor's Flock: Emma Morton, Ethan Kennedy
 Best Fleeced Sheep: Megan Higgins
 Premier Breeder: Emma Morton

NATURAL COLOR SHOW
 Junior Ram Lamb: Ava Jo Hayes
 Yearling Ewe: Marissa Vaccio, Timothy Walker
 Senior Ewe Lamb: Timothy Walker
 Junior Ewe Lamb: Katie Bombria, Katie Bombria, Marissa Faccio
 Pair of Ewe Lambs: Katie Bombria
 Champion Junior Ewe: Katie Bombria
 Reserve Champion Junior Ewe: Marissa Faccio



NAILE Junior Romney Show ~ time for sheep, waiting, awards and relaxing. Photos from Charlene.



Windy Oaks Farm

Bucks County, PA

Ron, Sue & Justin Andress

White & Natural
 Colored Romneys
 Spinning Fleeces

538 Geigel Hill Rd.
 Ottsville, PA 18942
 windyoaksfarm@frontiernet.net
 (610) 847-5419

Watch for our entries at shows, sales and festivals in 2012.



Moosehill Farm

Registered Romney Sheep
 White & Natural Colored

Breeding Stock Based on
 **Quality Fleeces
 **Strong Breed Type
 **Correct Conformation

Farm Visits Welcome

Carla Hellander
 508.885.5324
 Moosehill@aol.com
 Spencer, Massachusetts

~ Focusing on the complete Romney ~ White and Natural Colored Breeding Stock For Sale



JoAnn Mast & Kathleen Zappelli
58221 Lee Valley Road
Coquille, OR 97423
541-572-3094 (home)



Contact Us:
soromney@wildblue.net
southernoregonromneysonline.com
541-290-2103 (cell)

Notes From NAILE 2011 provided by Charlene Carlisle, Little Hooves Romneys

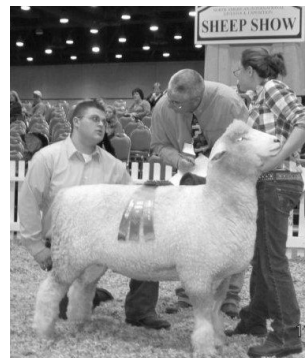
Once again, I have just returned from Louisville, Kentucky where the North American International Livestock Exposition is held every November. It is the largest livestock show in the world and is quite the venue. NAILE offers ten major divisions of livestock: dairy cattle, goats, llamas, alpacas, quarter horses, draft horses, market swine, beef cattle, boer goats, mules, donkeys and sheep. Also, there are seven major youth judging contests held during this time. All of this excitement is contained under one roof, making NAILE the premier livestock event in the world. There were more than 22,000 entries overall this year with sheep numbers running somewhere around 5,500.

The Junior Romney Show was represented by the following nine youth with twenty nine head of sheep: Colby Clark (NH), Bridgette Eldridge (CA), Ethan Kennedy (NY), Kristin Loughman (PA), Kaitlin MacIntyre (OH), Megan MacIntyre (OH), Emma Morton (RI), Gregory Rogers (NJ), and Cameron Snyder (IL). Four of the junior showmen were first time NAILE exhibitors while the others were seasoned veterans. The Saturday night pizza party was enjoyed by all junior exhibitors and their families and each received an embroidered hooded sweatshirt as a participation/appreciation gift. The pizza party allows families and youth to get to know one another outside of the show ring, this year the group was very talkative and eager to share their sheep stories. Show results will be posted elsewhere in this edition of the Ramblings, but the classes were very competitive and quality ran deep.

The Open Romney Show consisted of twelve exhibitors and sixty one head of sheep from the following states: NJ, OH, PA, CA, OR, IL and RI. Seven of these exhibitors were junior members who stayed on for the rest of the week. Competition was stiff and the juniors did not ease up the pressure for us more mature exhibitors, they continue to challenge us and keep us on our toes.

I had a great time as always and hope all the other exhibitors did as well. If you have never attended this phenomenal event, please take the time to come and bring your family, kids and sheep. Not only is the sheep showing top notch, the shopping arena offers something for everyone.

Special thanks to Ed and Helen Julian for all the planning that goes into making this event such a success. Also, thanks to all the exhibitors and their families for supporting our breed show. Hope to see you next year, bring a fellow Romney breeder yet, a new Romney breeder, and one extra head of sheep, and watch our show grow!



NAILE Champions ~ 2011 Junior Romney Show

CH Ram: Kristin Loughman
Julian & Moore 050

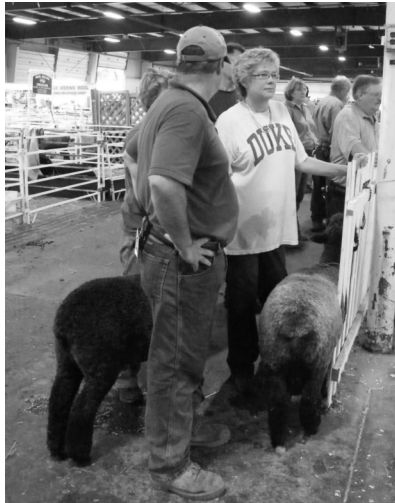
Res. CH Ram: Ethan Kennedy
Julian & Moore 120

CH Ewe: Emma Morton
Morton 0050

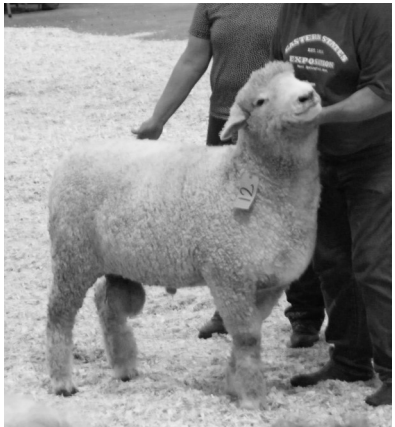
Res. CH Ewe: Bridgette Eldridge
S. OR Romney 1009

ARBA Annual Meeting, National Show and Sale at the Big E in West Springfield, Massachusetts.





Watching the show, waiting to enter the ring, presenting the animals for the championship drives, and rams entered in the National Sale wait for the sold signal.



National Sale Summary

White Division Sale Averages by Class

Yearling Ram (1)	\$600
Intermediate Ram Lamb (1)	\$250
Junior Ram Lambs (3)	\$466
Yearling Ewe (1)	\$375
Intermediate Ewe Lambs (5)	\$465
Junior Ewe Lambs (1)	\$300
Late Junior Ewe Lambs (4)	\$362
16 White Romneys Averaged	\$418

Natural Colored Division Sale Averages by Class

Yearling Ram (1)	\$350
Senior Ram Lambs (2)	\$400
Junior Ram Lamb (1)	\$300
Yearling Ewes (4)	\$700
Junior Ewe Lamb (1)	\$500
9 Natural Colored Romneys	\$528

Top Selling Romney: Natural Colored Yearling Ewe, \$1200, shown and sold by Julian and Moore Sheep Company.

White Romney Show Placings—Open Division

Yearling Ram: Southern Oregon Romney, Anchorage Farm, Anne McIntyre-Lahner, Foster Farm, Melissa Cunningham
 Intermediate Ram Lamb: Little Hooves, Emma Morton, Hilary Chapin, Emma Morton, Anchorage Farm, Ron Andress, Randy Thompson
 Junior Ram Lamb: Hilary Chapin, Anchorage Farm, Little Hooves, Randy Thompson, Ethan Kennedy, Little Hooves, Little Hooves, Dee Heinrich.
 Pair of Ram Lambs: Little Hooves, Hilary Chapin, Anchorage Farm, Emma Morton, Randy Thompson
 Yearling Ewe (Class 1): Emma Morton, Julian & Moore, Little Hooves, Hilary Chapin, Emma Morton, Anchorage Farm, Anchorage Farm, Hilary Chapin, Foster Farm, Foster Farm, Anne McIntyre-Lahner
 Yearling Ewe (Class 2): Emma Morton, Megan Higgins, Little Hooves, Ethan Kennedy, Hilary Chapin, Ethan Kennedy, Hilary Chapin, Little Hooves, Rachel Berninger, Brittany Shippee, Brittany Shippee
 Pair of Yearling Ewes: Emma Morton, Little Hooves, Hilary Chapin, Anchorage Farm, Ethan Kennedy, Brittany Shippee, Foster Farm
 Intermediate Ewe Lamb: Emma Morton, Hilary Chapin, Southern Oregon Romneys, Little hooves, Hilary Chapin, Hilary Chapin, Little Hooves, Little Hooves, Anne McIntyre-Lahner, Southern Oregon Romneys, Randy Thompson
 Junior Ewe Lamb (Class 1): Ethan Kennedy, Emma Morton, Anchorage Farm, Little Hooves, Ethan Kennedy, Megan Higgins, Megan Higgins, Foster Farm, Randy Thompson
 Junior Ewe Lamb (Class 2): Anchorage Farm, Little Hooves, Hilary Chapin, Ava Marie Raughley, Little Hooves, Foster Farm, Brittany Shippee, Brittany Shippee, Timothy Walker, Dee Heinrich
 Pair of Ewe Lambs: Emma Morton, Anchorage Farm, Little Hooves, Hilary Chapin, Ethan Kennedy, Southern Oregon Romneys, Megan Higgins, Foster Farm, Brittany Shippee, Randy Thompson
 Exhibitor's Flock: Emma Morton, Little Hooves, Anchorage Farm, Hilary Chapin, Ethan Kennedy, Foster Farm
 Breeder's Flock: Little Hooves, Hilary Chapin, Anchorage Farm
 Get of Sire: Hilary Chapin, Little Hooves
 Best Fleeced: Megan Higgins
 Premier Exhibitor: Little Hooves
 Premier Breeder: Emma Morton

White Show Champs

CH SR. Ram: Southern Oregon Romneys
 RCH SR. Ram: Anchorage Farm
 CH JR Ram: Little Hooves
 RCH JR Ram: Hilary Chapin
 Grand Champion Ram So. Oregon Romneys
 Res. Grand Champion Anchorage Farm
 CH SR. Ewe: Emma Morton
 RCH SR. Ewe: Julian & Moore Sheep Company
 CH JR Ewe: Emma Morton
 RCH JR Ewe: Hilary Chapin
 Grand Champion Ewe Emma Morton
 Res. Grand Champion Julian & Moore Sheep Company

Thompson Romneys

Randy & Elaine Thompson

4004 50th St Ct E, Tacoma WA 98443

253.926.8150 / Randy@bpfarms.com

- ARBA Registered
- White & Natural Colored Romneys
- Classic Romney Lines & Looks
- Fleece, Carded Wool & Yarn
- Breeding Stock
- Good Temperment



Thompson Romneys

A special thank you to the many donors who sponsored champion awards for the National Show. The open division show included 17 special awards and the junior show totaled 8 awards. Each award listed the sponsor, Romney breeders from across the country, and the Big E. See the ARBA website for the list. A big thanks to Rocket21.com for its sponsorship of the Junior Show; Bishops Orchards and Cabot Creamery for sponsorship of the Buyer's Reception; Twist of Fate Spinnery and Wild Fibers magazine for their generous donations to the Silent Auction.

2011 National Show Results—Natural Colored Open Class

- Yearling Ram: Al & Lin Schwider, Julian & Moore Sheep Company
- Senior Ram Lamb: Julian & Moore, Julian & Moore, Anchorage Farm, Julian & Moore, Randy & Elaine Thompson
Tawanda Farms
- Junior Ram Lamb: Anchorage Farm, Julian & Moore Sheep Company, Justin Andress, Ava Jo Hayes
- Pair of Ram Lambs: Julian & Moore Sheep Company, Anchorage Farm
- Yearling Ewe: Julian & Moore Sheep Company, Anchorage Farm, Lauren Julian, Southern Oregon Romneys,
Julian & Moore, Little Hooves, Anchorage Farm, Jill Morton, Southern Oregon Romneys, Anne
McIntyre-Lahner, Rachel Berninger, Marissa Faccio, Timothy Walker
- Pair of Yearling Ewes: Julian & Moore Sheep Company, Anchorage Farm, Southern Oregon Romneys
- Senior Ewe Lamb: Julian & Moore, Julian & Moore, Anchorage Farm, Hilary Chapin, Hilary Chapin, Timothy Walker
- Junior Ewe Lamb: Julian & Moore, Anchorage Farm, Hilary Chapin, Rachel Berninger, Katie Bombria, Katie
Bombria, Marissa Faccio
- Pair of Ewe Lambs: Julian & Moore Sheep Company, Anchorage Farm, Hilary Chapin, Katie Bombria
- Exhibitor's Flock: Julian & Moore Sheep Company, Anchorage Farm
- Breeder's Flock: Julian & Moore Sheep Company, Anchorage Farm
- Get of Sire: Julian & Moore Sheep Company
- Best Fleeced: Julian & Moore Sheep Company
- Premier Exhibitor: Julian & Moore Sheep Company
- Premier Breeder: Julian & Moore Sheep Company
- Best Headed Romney: Anchorage Farm

Bear Mountain Farm

REGISTERED ROMNEY SHEEP EXCEPTIONAL BLOODLINES



Joanne & Ray Smith
3469 Kent Hollow Rd.
West Rupert, VT 05776

802-394-7852

A 1 Breeding Stock
OPP Free
VSCP Certified
Prize Winning Fleece
Yarn...Maple Syrup

www.bearmountainfarm.com

- Natural Color Champs
- Grand CH Ram:
Julian & Moore
Sheep Company
- Res. Grand CH Ram:
Julian & Moore
Sheep Company
- Grand CH Ewe:
Julian & Moore
Sheep Company
- Res. Grand CH Ewe:
Julian & Moore
Sheep Company

Membership Renewals:
Use the enclosed renewal form and envelope to update your membership for the new year.



Top Left: Junior Exhibitors took part in classes at the Oregon State Fair (Ashley Culver, Nicole Murray, Ammelia Spielman, Anne Nichols, Caitlin Kuberski and Anna Kuberski). Top right: Junior exhibitor Ammelia Spielman was awarded Supreme Champion Ram at the Oregon Flock and Fiber Festival with natural color ram Israel. Lower Left and Right: Silver Creek Lambscapes received top honors at the Oregon State Fair, exhibiting the Champion white ram and Champion natural color ram.

2011 NAILE Class Winners-Open Show

Winter Ram Lamb: Little Hooves, Barnes, Barnes
 Spring Ram Lamb: Little Hooves, Little Hooves
 Pair Ram Lambs: Little Hooves, Barnes
 CH & RCH Ram: Little Hooves
 Yearling Ewe: Emma Morton, Little Hooves, Julian & Moore, Barnes, Little Hooves, Bridget Eldridge
 Pair of Ewes: Little Hooves, Barnes
 Winter Ewe Lamb: Emma Morton, Little Hooves, Barnes
 Spring Ewe Lamb: Cameron Snyder, Little Hooves
 Pair Ewe Lambs: Cameron Snyder, Little Hooves
 CH Ewe: Emma Morton RCH Ewe: Cameron Snyder
 NC Winter Fall Lamb: Shelton Romneys, Little Hooves
 NC Winter Ram Lamb: Julian & Moore, Little Hooves
 NC Spring Ram Lamb: Julian & Moore, Kristin Loughman, Cameron Snyder, Little Hooves
 CH & RCH Ram: Julian & Moore Sheep Company
 NC Yearling Ewe: Julian & Moore, Kaitlin MacIntyre
 NC Fall Ewe Lamb: Julian & Moore
 NC Winter Ewe Lamb: Julian & Moore, K. Loughman
 NC Spring Ewe Lamb: Julian & Moore, Little Hooves
 CH & RCH Ewe: Julian & Moore Sheep Company

NAILE Champion Wool Breed Fleece Winner

Penny Swearingen, Jonesville, Michigan was the exhibitor of the winning fleece at the 2011 wool show.

New York Sheep & Wool Show

The following Romney breeders took time to prepare and show their sheep at the New York Sheep and Wool Show in Rhinebeck, New York. Suzie Phillips (NY), Devlin Kennedy (NY), Margaret VanCamp (MI), Carole and Abigail Foster (NY), Charlene Carlisle (NJ), Hilary Chapin (NH), Anchorage Farm (NY), Ethan Kennedy (NY), Sadie Moore (NH), Cynthia Ciecwa (MI) and Regina Embler (NY). Class winners included: Junior ram lamb, Hilary Chapin; Pair of ram lambs, Hilary Chapin; Yearling Ewe, Hilary Chapin; Pair of Ewe Lambs, Hilary Chapin; Best Pen of three lambs, Hilary Chapin. NC Yearling Ewe, Little Hooves; NC Junior Ewe Lamb, Wooly Wonders; NC Junior Ewe Lamb, Little Hooves; Pair of Ewe Lambs, Little Hooves. NC Champion Ewe, Little Hooves.

The BEST of the WEST

Documented Heritage Color Patterns

Lambs and Yearlings Available With:

Diverse Blood Lines

Color Genetics That Yield ~15 Fleece Shades

Gentle Dispositions • Beautiful Fleeces

Post-Sale Support



Multi-Generation Pedigrees • Newborn Pictures

WE WELCOME YOUR INQUIRIES

Missing Creek Farm
541.259.5052
c.bazant@centurytel.net

Neverends Farm
541.487.4672
averyc@peak.org

Tawanda Farms
530.459.0966
tawandafarms53@att.net

American Romney Breeders Association
12775 N.W. Oak Ridge Road
Yamhill OR 97148

SKYVIEW FARM

Ray and Marlene Gavin
8252 Lahring Road
Gaines, MI 48436
989-271-9590

skyview@directv.net

Award Winning Romney Fleeces and Breeding Stock



