



**January
2019**

Inside this issue:

ARBA Connections	2
Director Reports	3-4
Memorial	5
Member Highlight	6
Calendar of Events	7
Futurity Results	7
Show Results	9-13
Lambing School	10
Sheep Health	11-14
Big E Showmanship	15
Raffle Winner	16

Secretary or Registrar?

When should you send information to the ARBA secretary and when should you send paperwork to Associated Registries?

General association questions can be directed to the secretary or any board members.

Membership, futurity and fund raising monies are sent to the secretary.

Information for the Romney Ramblings and the ARBA website is sent to the secretary.

Animal registrations and transfers are sent to Associated Registries in Wamego, Kansas.

Pedigree searches and requests are done by Associated Registries.

If paperwork for the registrar is sent to the secretary, an added week or more will be added to the processing time.

Romney Ramblings

Newsletter of the American
Romney Breeders Association

President's Message

By Chris Posbergh

Hopefully everyone is ready for winter. For some of us in the Northeast there has been snow on the ground since mid-November! It's been an excellent year for Romneys and should continue through next year.

The ARBAS board is working diligently to improve the association and breed through the strategic plan. If you haven't already seen the Gaggle email group, it is up and running to keep members connected. In addition, we are working on a slew of other topics which you can read about in the Board minutes on the website and some parts of the Ramblings. 2019 will be a year of change in Board membership, so if you are interested in becoming more involved, I encourage you to talk with your district director or any board member about ways you can aid the breed.

I look forward to seeing everyone throughout the year and especially at our annual meeting at Wisconsin Sheep & Wool Festival in September. I hope everyone had a happy holiday season and is having a successful lambing season.



2019 Elections

Board members and leaders are needed for the slate of officers to be compiled for the 2019 ARBA ballot. If you are ready to step forward, now is a good time to take action.

Positions to be filled include President, Vice President, Director At Large, and District Representatives for Regions 1, 3 and 5. To be eligible you need to be an active member (paid membership by January 31), contact a board member to announce your intent (by May 1), submit a short biography to secretary (by May 15) and make plans to attend the annual meeting in September.

Contacting current board members is the best method of finding out your role in each of the positions. Information can also be found on the website, americanromney.org.

Romney Ramblings

The Romney Ramblings is the newsletter of the American Romney Breeders Association. The purpose of the Ramblings is to provide sheep industry news, highlight the efforts of ARBA, announce events and activities, provide an outlet for promotion of your sheep and wool products and recognize the accomplishments of the membership.

Advertising in the Ramblings

Full Page \$100

1/2 Page \$75

1/3 Page \$60

1/4 Page \$35

Card Ad \$20

Classified Ads—45 cents per word.

Above rates are based on camera ready copy, sized to fit the space purchased for the ad. Ads prepared by the editor will be charged at \$15 per hour, with a minimum fee of \$15.

Send all advertising information and news to: JoAnn Mast

58221 Lee Valley Road
Coquille, OR 97423
(541) 572-3094

soromney@wildblue.net
secretary@americanromney.org

Mentoring Program

Mentors are available to assist breeders with questions, discuss upcoming events, chat sheep and help promote the membership. The following ARBA members have signed up as mentors, and this list will be posted on the website and updated in future editions of the Ramblings.

Sylvia Murray—Smurray@alderbrookromneys.com

Al & Lin Schwider—al@thepinesfarm.com

Ralond & Ruby Troncin—(503) 583-1660 or (971) 237-3150

Penny Swearingen—pswearingen@dmcibb.net

Regina Embler—(518) 872-2427 applewoodacre@yahoo.com

Numbers for 2018

2018 has come to completion, and it is a good time to see the numbers associated with activity in the association. ARBA ended the year with 282 active members, 205 adults and 77 juniors. By district, the breakdown of total members is as follows: #1 – 50; #2 – 87; #3 – 61; #4 – 26; #5 – 35; and #6 – 23. Using the information from membership forms submitted to the secretary, the number of sheep registered per farm is listed as: 133 members with 1-10 animals; 56 members with 11-29; 19 members with 30-49 sheep; 3 members with 50-70; and 4 farms with 71 or more. This represents 216 responses, so not a full report, but due to memberships paid to Associated Registries and those not listing the number of sheep, it is as complete as it can be. Registrations for the association added 1,033 sheep and 507 transfers of ownership were recorded for the year.

Welcome to our New Members

Joining ARBA after September 1, 2018

Taylor Young, junior member, Bell Buckle, TN
Sarah Nolin, Hurricane Ridge Farm LLC, Corinth, VT

Welcome to all of our new ARBA members in 2018. Take time to introduce yourself to these new Romney breeders. Contact information can be located on the ARBA website, membership directory. www.americanromney.org

ARBA on Facebook Check out the American Romney Breeders Association facebook page: <https://www.facebook.com/americanromney>. to see events, news and reminders about the association.

ARBA on Instagram ARBA now has an Instagram account for sharing events and news about the association. Its handle is: [@americanromney](https://www.instagram.com/americanromney).

Gaggle A new online email group has been formed as a way for members to share information about their sheep, management practices, events, etc. with each other more easily and be up to date on what the ARBA Board is working on. It is hosted through Gaggle Email. For more information and how to join if you have not already received an introductory email, contact Carol Pasheilich, District 5 Director.

On The Cover: Lambing time brings the results of much planning. Champion ram at Regional Show in District 5, shown by Al and Lin Schwider, The Pines Farm. Natural colored sheep in the flock of Rebecca Harkins, see article in this edition. Ewe Haul trailer used to transport animals for programs and shows where Rebecca Harkins promotes the Romney breed.

Rambling Roads ~ Notes from District Directors

District One—New England

Greetings from Connecticut! Show and breeding season has wound down and soon we all will be welcoming lambs. The District 1 Regional Show at the Big E was a success. Breeders gathered for a potluck on Sunday night. It was great to have a nice cooked meal and chat with other Romney breeders before the show. The Romney show occurred Monday, September 24, judged by Jake Reister. A total of 60 head were shown by 10 exhibitors.

Results of the regional show include: CH Ram, Catherine Hromis; CH Ewe, Emma Rogers; CH NC Ram and Ewe, Teresa Hromis. Both Romney rams were pulled in the top for contention for supreme ram. Additionally, for the second consecutive year a white Romney owned by Little Hooves Romneys, Charlene and Kenny Carlisle, was chosen as Supreme Fleece.

In the wool show, Mary Pratt received RCH Purebred Fleece on her white Romney fleece from the Longwool Purebred (White) Division.

For the first year junior members were challenged with competing in an all breeds showmanship class. Romney youth held their own with Cadence Higgins and Megan Higgins winning the junior and intermediate divisions, respectively. Catherine Hromis placed third in the intermediate division and Teresa Hromis earned third in a stiff senior class.

Further show results for district 1 include Catherine Hromis's white Romney yearling ram being selected Supreme Ram. Go Romneys!

While fewer activities occur during the winter time, before we know it spring will be upon us with new lambs running around. For fiber enthusiasts, sheep and wool/fiber festivals will be happening. Be sure to check organizations websites to gather dates for upcoming events, including Connecticut Sheep, Wool and Fiber Festival typically in April and New Hampshire Sheep and Wool Festival.

If you have additional information you would like shared or just want to discuss Romneys please contact me! Wishing all a successful lambing season.

Emma Morton Rogers, Director
emmamorton246@gmail.com
401-470-5306

District Two—East

Warm winter greetings! Time to bundle up, plug in the water heaters, and fill the hay loft. Be sure to stock up on hay if you haven't already! Although the rainy year we've had may have been good for the grass, it was not good for hay making. At least in Maryland, but most likely the majority of District 2, farmers are low on hay supply and selling out quickly. This is also the time of year we hope to start seeing growing bellies on (hopefully) pregnant ewes.

As we prepare for lambing season, I highly recommend attending a Lambing and Kidding School. This year the University of Maryland Extension is hosting the 2019 Lambing and Kidding school on Saturday, January 19th from 9 a.m. to 4 p.m. at the Howard County Fairgrounds. Cost is \$60 per adult (refreshments, lunch and flash drive included) and \$45 for youth (special hands-on youth program). For more information, visit www.wxwnrbrite.com/e/2019-lambing-kidding-school-tickets-50417091879 or contact Susan Schoenian at 310-432-2767 x 343 or sschoen@umd.edu.

Don't forget to stay up to date with the ARBA Facebook page and website, District Facebook groups, and the Junior Facebook group. If you are in District 2 and have not already done so, please join our group, American Romney Breeders Association District 2, so that we can all share our sheep adventures, sales, and achievements.

I would love to hear about all of the Romney happenings in our district as well as any ideas for ARBA. Please call or email me with ideas, upcoming events, show and sale results, or just to chat about sheep. Best wishes to EWE this holiday season.

Allison Seyfert, Director
mistyrosefarm@rocketmail.com
410-804-0492

District Three—Central

Don Burgess, Director
don.w.burgess@gmail.com
330-317-3326

District Four—Oregon

Nicole Murray, Director
coveredbridgefiber@gmail.com
541-900-0038

District Five - West

Region 5 held their regional show at Evergreen State Fairgrounds in Monroe, WA over the Labor Day Weekend. The show was organized and managed under the capable hands of Al Schwider and Greg Hordyk. They did an outstanding job and saved the District Director, who is not experienced in putting on sheep shows. I am very grateful. Winners in that show included the Schwiders from the Pines Farm; the Thompsons from Thompson Romneys; the Wolf family from Wolf Creek Farm; and the Hordyks from Sand Hill farm. Congratulations to all of you and thank you for making it a successful show.

In this issue of the Ramblings you will find an article introducing a small breeder from District 5. I would like this article to be the first of many in the Ramblings. My purpose in doing this is to facilitate the membership in getting to know one another. Since we don't all go to the big shows and we are not all from well known breeding farms, I think it is important for us all to know breeders who are actually promoting our breed in good ways. If you are from District 5 and would like to be featured in a future Ramblings, please contact me and we will get your name out there.

I urge every member read the minutes from the board meetings which are posted on the ARBA website. The board is working on a new plan, which Chris Posbergh, our president, mentioned in the last Ramblings. Anne McIntyre-Lahner is guiding and directing our forward motion.

I also would like to remind every member to participate in our Gaggles group: americanromney@gaggle.email. You can ask questions about lambing, breeding, breed standard; you can brag or you can advertise breeding stock.

Carol Pasheilich, Director
tawandafarms53@att.net
530-459-0966



District Six—South

Hello from District 6!

Winter has arrived in Virginia, dumping 15 inches of beautiful snow! Of course the sheep don't mind as long as their hay feeders are full and barn doors are open. I hope everyone is cozy and warm during these winter months and resting before lambing season begins!

Phillip Simmonds from Troy, Kansas was kind enough to submit a couple of paragraphs to my District notes—thank you Phillip. He is currently a pre-med sophomore at Highland Community College and is pursuing a future career as an orthopedic surgeon!

Hello everyone! With winter setting in, here at Simmonds Ranch, I finally have time to sit down and go over my notes from seminars and classes that I took this year. If anyone knows me, they know that when I go to meetings, seminars, or even just to a friend's farm, I will always bring my pocket notebook or my yellow notepad to jot down any tidbits of information that will help me improve my farm. I believe that learning from and helping each other is the best way for us to be successful.

This year I went to a class at the (first) Kansas Sheep Symposium, taught by the owner of The Shepherds Mill, Sally Brandon. The session was about developing a spinner's market. As we all know, networking is a major aspect to any good

niche market. That is exactly what we, as Romney fiber producers have, is a lovely, niche market. Romney wool is, in my opinion, a great wool for begging fiber workers to gain experience on. It is fairly easy to hand wash (I haven't felted any yet!) and it spins up nicely for my projects. This is great for us, because we are at a time where there are new people wanting to learn to spin, and they can readily learn that Romney wool is a great beginners wool.

One thing we as modern fiber producers have to our advantage is social media. I know it can be a battle ground, but having a web presence is very important to helping us expand our current markets. I know that I sell all my fleeces through Facebook market groups. This has been very successful for me, having sold all my coated fleeces from 2018. One thing to keep in mind, is that many hand spinners are doing it for the story of it. They want to hear the backstory on the fleece they are purchasing. They want to know the name of the sheep that produced it.

I hope some of the information that I am sharing will help all of you tweak your fiber markets like I am doing with mine. I am updating my website, I am having wool sent off to be processed for further sales, and I am getting out there and

making my web presence known! Good luck!

Phillip Simmonds, District 6

Betsy McPherson, Director
betsymcp711@gmail.com
804-883-5078

Welcome Junior Member

Hello everyone! My name is Taylor Young and I am new to the Romney breed. Currently my family and I live in the heart of Middle Tennessee and raise Southdowns, Shropshires and Katahdins, and new this year are our Romneys.

I currently have three ewe lambs, two whites and one natural colored. I decided to get into Romneys for a different opportunity and something new!

I met several breeders at NAILE and everyone has been so kind and helpful, not being in it very long I was welcomed quick! I am excited to be on this new journey and continue to meet new people and can't wait for the future.

I hope everyone has a great lambing season, and I hope to see everyone this coming spring and summer.

This article was submitted to the Banner magazine and is posted on the ARBA website. Thanks and welcome, Taylor.

Sharing fiber preparation during the Black Sheep Gathering



ALB Lamb Jam Tour

The American Lamb Board is excited to announce the 2019 Lamb Jam Tour dates and locations. It all begins in 2019 on March 31 in Austin, Texas. The additional dates and locations include April 14 in Washington, DC; May 19 in Seattle, WA; June 23 in Boston, MA; July 21 in San Francisco, CA; and August 25 in Denver, CO.

Lamb Jam brings together top local chefs and lamb lovers to celebrate flavorful American Lamb. ALB started the event series in 2010 as a way to build awareness and excitement about American Lamb in key markets. Over the past 8 years the tour has reached more than 200 chefs, more than 10,000 consumers and connected lamb suppliers with new customers.

Another year has slipped by and it is already time to start making the list for 2019. It seems the list usually has some items left from the previous year, and in some cases, years.

In addition to serving as the secretary, treasurer and editor of the Ramblings, I still raise Romney sheep and try to promote the breed as I make selection and retention decisions. I know the type of Romney I enjoy, and it has been changed little over the sixty years I have been working at it.

As with many, I started with a bummer lamb or two, then moved that business up to include lambs from the commercial flock. The crossbred lambs were not saved for my flock, but they did provide practice in keeping lambs healthy and the income helped secure rams. I started showing sheep at our county fair just before celebrating my 4th birthday. I continued doing that for most of my life, at one or two shows per year. My marketing expanded when I retired from Oregon

State University, adding trips to the mid-west and east to my show and sale schedule. It also gave me a great opportunity to meet many ARBA members and visit their farms or see their sheep at fairs.

My flock is smaller, but my drive to select and breed quality sheep moves on.

Continue to make my ARBA job easy by submitting articles, photos, ideas and ads.

JoAnn Mast, Editor
secretary@americanromney.org

In Memory: Ray S. Goff, ARBA member

Ray S. Goff, 89, of White Mills, Kentucky passed away Saturday, November 10, 2018 at the Masonic Nursing Home in Shelbyville, KY.

He was born in Belmont, KY to Virgil and Nettie Mae Stark Goff. He was a carpenter and member of the United Carpenter's Union Louisville. Ray was a volunteer for the White Mills Fire Department and a member of Grand View Baptist Church in Elizabethtown, KY.

He was preceded in death by his wife, Anna Catherine Nett Goff; his parents; three sisters; Louise, Genevieve and Juanita, and a son in law, Dennis Deck.

He is survived by his five sons, Glenn (Diana) Goff of Mammoth Cave, Larry Goff of Cecilic, Carl (Nedra) Goff of Big Clifty, Lloyd (Viola) Goff of Munfordville, and Neil Goff of Constantine; a daughter, Ruth Deck of Hodgenville; 17 grandchildren; 31 great-grandchildren and two great-great-grandchildren.

His service was held at the Manakee Funeral Home in Elizabethtown, KY with Rev. John R Clark officiating. Burial followed at the White Mills Community Cemetery.

Oregon Lambing School 2019

Oregon Sheep Growers Association will be holding a lambing school on Saturday, January 26 in Glide, OR. This class will provide a unique opportunity to observe, learn and handle actual lambing situations. Students will experience castration, docking, vaccination, and emergency situations as they occur. Presenters include Gene Pirelli, retired OSU Extension specialist and sheep producer, Dr. Paul Bailey, DVM and John Fine, experienced sheep producer and instructor.

Fee is \$50 and includes lunch. To register, call (503) 364-5462 or email info@sheeporegon.com.

Out-Of-Season Breeding

More than 200 sheep producers from the U.S. and Canada took part in the webinar, Approaches to Enhancing Lambing Rate from Out-of-Season Breeding, which is now archived and available for additional viewing.

YouTube:

<https://www.youtube.com/watch?v=QJwZuArj1as&feature=youtu.be>

For slides: <http://www.optimalag.net/sheepagrculture/>

A paper on the use of PG-600 to synchronize ewes for out of season breeding has also been published and can be accessed through the link below:

<https://academic.oup.com/tas/article/3/1/172/5086070>

Contact Information For American Romney Breeders Association

Chris Posbergh, President

381 Burnt Mill Road
Somerville, NJ 08876
president@americanromney.org
(908) 310-8548

Randy Thompson, V. Pres.

4004 50th St. Ct. E.
Tacoma, WA 98443
vp@americanromney.org
(253) 926-8150

Charlene Carlisle Director At Large

510 Centerton Road
Moorerstown, NJ 08057
c.carlisle@littlehooovesromneys.com
(856) 866-1747

Anne McIntyre-Lahner Director At Large

2577 Boston Post Road
Guilford, CT 06437
olympiafarm@att.net
(203) 458-3070

Scott Culver Director At Large

3455 N.E. Granger Road
Corvallis, OR 97330
scott.culver@oregonstate.edu
(541) 231-3398

JoAnn Mast
ARBA Secretary/Treasurer
58221 Lee Valley Road
Coquille, OR 97423
secretary@americanromney.org

Associated Sheep Registries

P.O. Box 231 305 Lincoln
Wamego, KS 66547
(785) 456-8500

Romney Ramblings Editor

JoAnn Mast
58221 Lee Valley Road
Coquille, OR 97423
soromney@wildblue.net
(541) 572-3094



Champion Romney

The ram in the photograph was a highly competitive champion, in classes with Romneys and against meat breeds. His conformation was such that he was an unusual dual purpose ram, displaying high quality wool, a highly desired level of muscle and a gentle temperament.

He was bred by Cecilia Tibbitts of Skowhegan, Maine in the mid 1950's. Michael Trevor submitted this information and his family became the owner of the ram around 1954. This was a welcome upgrade for their flock, which had been using grade rams bred up from wild Scotch Black Faces over about a ten year period.

Meet Rebecca Harkins - submitted by Carol Pasheilich

Rebecca is a soft spoken, bright and enthusiastic young woman who resides in southeastern Washington, Kennewick. She is the owner and breeder of 9 Romney ewes and 2 Romney rams, all recessive. She has a good understanding of recessive color genetics and has a variety of color patterns in her ewes and rams. She also raises Merino and Merino crosses.

Rebecca is an excellent spinner who came to Romneys because of their wonderful fiber. She uses every part of the fleece, nothing is left. She has been on a quest to spin as many different breeds as possible and has spun fiber from 20 different breeds, and is not done yet.

She not only spins her own fleece, she also sells many of her fleeces to hand-spinners. And those lambs who do not make the 'worthy to keep' list are sold whole for her meat market. She told me she breeds for little to no cross fiber in her fleeces. She wants a clean, well defined lock that holds together on its own.

Rebecca loves all facets of sheep owning and breeding. She is an ambassador for the species and for Romneys in particular by participating in local



fairs, answering questions and letting the children touch the sheep. She also works in conjunction with her local library system on a program where she takes lambs into 5 different libraries for all to see. The program is held in the spring when there are new lambs. The children can touch them, have their pictures taken and the children and their parents can ask questions about sheep and farming. This program has brought in over 1500 people. The last library had 500 people in attendance. This is important work for our breed.

Rebecca's efforts are targeting a single goal: the purchase of a 100 acre farm. Once there, she can increase her flock and grow her business. That is a very wonderful goal. We wish her well in this endeavor.

When I asked her what she would like from ARBA, she said more education. She would like to see workshops and articles that share knowledge and start conversations. As an example, she has heard of a man selecting sheep who had the ability to shed vegetable matter from their fleeces. She would like to know more about that.

Rebecca Harkins represents young, new breeders ARBA needs to support. These are small flock breeders that make up the foundation of our association. They are enthusiastic, intellectually curious and love their Romneys.

2018 Futurity Results

The paperwork has been collected and the results tallied for the 2018 Youth Futurity Program. Thanks to the 13 youth exhibiting their futurity sponsored sheep, the 12 breeders or owners who entered animals in the program (\$20 sponsorship fee) and a total of 43 Romneys entered in the program, this year was a very active one.

The following results are based on the number of shows attended, the placing at each show and the submission of reports following each show. Report includes placing, youth participant and sponsored sheep.

White Romneys:

Home Raised Ewe Lamb

1st Weston Pettit (OH) Pettit 1001

Purchased Ewe Lambs

1st Courtney Lyman (MA) Thistledown 801
 2nd Catherine Hromis (NH) Little Hooves 7169
 3rd Anne Nichols (OR) Kalina 848
 4th Callie Burgess (OH) Pitchfork 1005
 5th Ava Jo Hayes (NJ) Little Hooves 884
 6th Lydia Henry (OH) Little Hooves 812
 7th Megan Zallen (MI) Plank Sheep 1802

Home Raised Yearling Ewe

1st Catherine Hromis (NH) Winding Wicks 0049

Purchased Yearling Ewes

1st Addison Wolff (OR) Kalina 713
 2nd Weston Pettit (OH) Little Hooves 733

Natural Colored Romneys

Home Raised Ewe Lambs

1st Teresa Hromis (NH) Winding Wicks 54
 2nd Courtney Lyman (MA) Lyman 1802
 3rd Caitlin Plank (MI) E/C Plank 1812
 4th Caitlin Plank (MI) E/C Plank 1807
 5th Caitlin Plank (MI) E/C Plank 1810

Purchased Ewe Lambs

1st Ellis Rincker (MI) Little Hooves 8107
 2nd Megan Zallen (MI) Plank Sheep 1559
 3rd Malorie Schmoll (WI) E/C Plank 1820

Home Raised Yearling Ewes

1st Teresa Hromis (NH) Winding Wicks 0039

Purchased Yearling Ewes

1st Weston Pettit (OH) Little Hooves 736

Results submitted by Charlene Carlisle.

Upcoming Sheep Events

Jan. 12-14: Texas Shearing School – San Angelo, TX
AgrLife.org/sheepandgoat/registration.

Jan. 12-27: National Western Stock Show – Denver, CO
www.nationalwestern.com.

Jan. 17-19: Utah State Univ. Shearing School—Wellsville, UT
tracy.hadfield@usu.edu

Jan. 18-Feb. 9: Fort Worth Livestock Show – Fort Worth, TX
www.fwssr.com.

Jan. 19: Lambing and Kidding School—Howard County Fairgrounds. sschoen@umd.edu.

Jan. 23-26: ASI Annual Convention – New Orleans, LA
Sheepusa.org.

Jan. 28-30: Advanced Shearing School—Newell, S.D.
 Mike Hagens 701-220-6636.

Jan. 31: All-American Sheep Day at Black Hills Stock Show—Rapid City, S.D.—BlackHillsStockShow.com

Jan. 31: Colorado farm Show's annual Sheep Day—Greeley, CO
ColoradoFarmShow.com

Feb. 2-3: Advanced Shearing School—Dillon, MT Mike Schuldt
 406-852-3462

Feb. 8-9: Maryland Shearing School – Dale Lehman Farm, Western MD
adgeiman75@gmail.com

Feb. 23: Washington State Lambing School—Mabton, WA
WSSP.org

Mar. 6-7: Missouri Shearing School – Jefferson City, MO
 (573) 681-5859.

Mar. 16: Washington State Lambing School—Ellensburg, WA
WSSP.org.

April: Connecticut Wool and fiber Festival—Vernon-Rockville, CT
www.CtSheep.org

Apr. 2-6: Washington Shearing School – Moses Lake, WA.
www.wssp.org.

Apr. 7: Advanced Shearing School – Moses Lake, WA.
www.wssp.org.

Apr. 12-13: Ohio Shearing School—Hebron, OH OhioSheep.org

Apr. 11-13: Shepherd's Cross Shearing School – Claremore, OK
ShepherdsCross.com.

Apr. 11-14: Puyallup Spring Fair – Puyallup, WA. TheFair.com.

Apr. 13: California Ram Sale – Porterville, CA
CaliforniaWoolGrowers.org

Apr. 13: Stephenson County Fiber Arts Fair – Cedarville, IL
 (815) 541-0897.

Apr. 25-28: Oregon Shearing School—Douglas Co. Oregon
johnandpeggyfine@charter.net

Apr. 26-27: Tennessee Shearing School – Murfreesboro, TN.
TennesseeSheep.org.

Apr. 26-27: Western Pennsylvania Shearing School – Scenery Hill, PA
wob10@psu.edu

Apr. 27: Powhatan's Festival of Fiber – Powhatan, VA. Powhatans-FestivalOfFiber.com.

Apr. 27-28: Washington County, NY Annual Fiber Tour
<http://washingtoncountyfibertour.org>

May 4-5: Maryland Sheep and Wool Festival—West Springfield, MD
www.SheepAndWool.org

May 10-12: Shepherd's Harvest Sheep and Wool Festival
 Lake Elmo, MN www.ShepherdsHarvestFestival.org

May 11-12: New Hampshire Sheep and Wool Festival—Deerfield, NH
www.nhswga.com

May 25-26: Romney Specialty Sale—Great Lakes Sale
 Wooster, OH 309-785-5058 Entries Due March 15, 2019

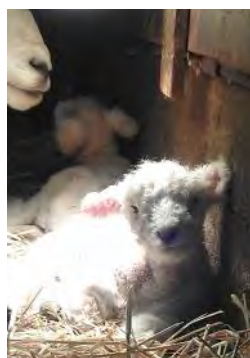
June 7-8: Hoosier Hills Fiber Festival—Franklin, Indiana
www.HoosierHillsFiberFestival.com



Above: Yearling Ram class at Region 5 show held during the Evergreen State Fair in Monroe, Washington. Top honor went to The Pines Farm, Al and Lin Schwider. Ram was also selected as the Supreme Champion Ram.

Top Right: Morgan Wolf, Wolf Creek Farms, exhibited the Supreme Champion Colored Romney fleece. She also won Supreme Young Flock with her entry of Romney lambs.

Lower Right: Randy and Elaine Thompson, Thompson Romneys, show fleeces entered in the regional show. They received Reserve Champion fleece in the show.

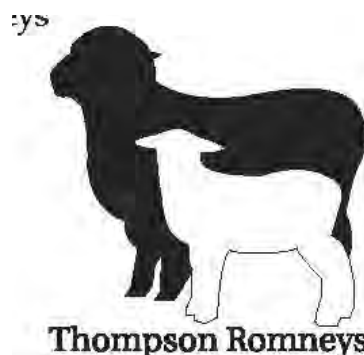


New Year and the hope for healthy New Lambs.

Thompson Romneys

Randy & Elaine Thompson
4004 50th St. Ct. E., Tacoma, WA 98443

- ARBA Registered
- White & Natural Colored Romneys
- Classic Romney Lines & Looks
- Fleece, Carded Wool & Yarn
- Breeding Stock
- Good Temperament



Thompson Romneys

Join ARBA

Dues for membership are currently being processed. If you have not renewed your membership, now is the time. If you know of Romney breeders who are not members, invite them to become part of the association. If you sell sheep to new Romney breeders, consider adding a year of membership with the sale.

Annual dues: \$25 for adults
\$10 for juniors

Applications are on the ARBA website: americanromney.org
Payment is sent to the ARBA secretary:

58221 Lee Valley Road
Coquille, OR 97423

North American International Livestock Expo held their annual livestock show in November 2018. All species of livestock were exhibited in the famous show ring on the prestigious GREEN shavings. Thousands of spectators viewed the shows at Louisville, Kentucky and many, many more watched from home on the live-stream web cast. The internet has brought a whole new aspect to the show world.

All of the Romney Junior Exhibitors received a pair of black track pants with the Romney logo on one side and NAILE show on the other, this is a gift for supporting and exhibiting sheep at our Romney show. Generous donations were received from youth supporters to help purchase the track pants and awards. Also we had a silent auction this year at our breed display, a Ketchum 5 foot A-frame feeder donated by the Plank Family and Lucky Ewe sheep mineral/Lucky Buck Deer mineral with hat donated by Mar-vo Mineral. Proceeds went to the youth show fund.

The Romney Junior Spectacular show was the first weekend of the sheep shows. The Romney's were well represented with 38 head entered. Exhibitors were: Ethan and Caitlin Plank (MI), Teresa and Catherine Hromis (NH), Weston Pettit (OH), Lindsey and Malorie Schmoll (WI), Ava Jo Hayes (NJ), Andrew and Madison Feehan (OH), Courtney Lyman (MA), Callie Burgess, (OH), Taylor Young (TN). Judging the youth show was Tor Sorensen from Tucson, Arizona. Champion Ram went to Ethan Plank on his Intermediate Natural Colored ram lamb and Reserve Champion Ram was Caitlin Plank on a Fall born Natural Colored ram lamb. Champion Ewe went to Lindsey Schmoll on her White yearling ewe, Reserve Champion Ewe went to Catherine Hromis with her White fall ewe lamb. Best White Fleece on the hoof went to Lindsey Schmoll and Best Colored Fleece on the hoof went to Courtney Lyman. Best Romney Head went to Theresa Hromis on her Natural Colored ewe lamb. Ending of the Junior show was the supreme drive for the rams and ewes. In the ewe drive the Romney ewe was the only wool breed sheep to be pulled out in the top five for consideration. Although the Romney wasn't chosen, she gave the judges a tough run for their money. What a thrill for the Schmoll girls.

The Open Show was held on Sunday, November 11, 2018. White and Natural Colored had their own divisions, 70 head walked over the green shaving and were judge by Chris Myers from IL. Grand Champion White Ram was a Yearling owned by Catherine Hromis and Reserve Champion went to Hayley Hares Spring Ram Lamb. Grand Champion Ewe was a Yearling owned by Ethan Kennedy and Reserve Champion Ewe was on a spring ewe lamb owned by Ethan Kennedy. Best White Fleece on the hoof was a winter ewe lamb owned by Ava Jo Hayes. Premier Exhibitor of White Romney went to Little Hooves Romney's.

Grand Champion Natural Color Ram was a Spring born, owned by Ethan Kennedy and Reserve Champion Ram went to Ethan Kennedy on 2nd place Spring Ram lamb. Grand Champion Natural Color Ewe was a Spring born owned by Brooke Young and Reserve Champion Ewe was on 2nd place Spring born ewe lamb owned by Ellis Rincker. Best Natural Colored Fleece on the hoof was the Winter ewe lamb owned by Little Hooves Romney's. Premier Exhibitor of Natural Colored Romney was Caitlin Plank.

Over all, the Romney show had higher entries than 2017. Super good set of sheep from top to bottom of all of the classes. In 2019, the Romney's will be showing Thursday at the end of the week, all breeds are now on a rotation in showing. This show is the one of the few premier livestock shows in the United States. The promotion of the Romney at this event is unmeasured. Romney's are alive and well and have a lot to offer the sheep industry. It is up to all Romney Breeders to keep us in the fore front with a positive image, positive press and a positive bottom line.

Romney Superintendent of NAILE
Willis Plank



Left: Lindsey & Malorie Schmoll with their Champion Romney Ewe in the junior show.

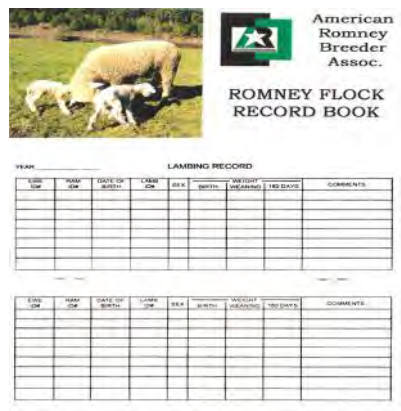
Center: Class entry lined up for judging.

Right: Ten of the thirteen youth promoting and showing Romneys at NAILE.

February 8th and 9th, 2019

For more information visit our web page www.pipestonesheep.com or contact Angie Houselog at 507-825-6822 or Email: angela.houselog@mnwest.edu

Provides general sheep information and space to record lambs born and raised for 1 or several years.
Price: \$3.00 post-paid.



A photograph showing a flock of sheep, including white and brown varieties, grazing in a lush green field. In the background, there is a dense forest of tall, thin trees on a hillside under a clear blue sky.



Charlene Carlisle holds the plaque awarded for Premier Exhibitor in the white Romney division at NAILE.

Little Hooves Romneys

White & Natural Colored
Breeding Stock

The Carlisle Family

510 Centerton Road 856-866-1747 (home)
Moorestown, NJ 08057 609-760-0399 (cell)
www.LittleHoovesRomneys.com
email: c.carlisle@littlehoovesromneys.com

Direct Sales Listing

I am a hand spinner who only works with local fleeces, and I designed a website for fiber farms to network with local hand spinners to sell fleeces direct. I know of many amazing fiber farms who do not have websites or social media accounts, so I hope this resource will be helpful for them to network with their local hand spinners. The site is ready for new listing and is functional on all devices. It can be searched worldwide.

The website address is: www.mylocalwool.com
Fiber Farms get 50% off their first year with coupon code MLW2018.

Subscribe at: www.mylocalwool.com/new
Festivals and Guilds are being added for free and the map already has 10,000 hits. Fiber farms can pay what they can, as low as \$5.00 per year. I want this to be an economical investment for everyone involved. We are already advertising in PLY Magazine and as we get more farms on the map we want to advertise in other print and online resources.

For more information contact:

Ashley Marineau
Curator, MY Local Wool
www.mylocalwool.com

New York Bred Ewe Sale

Romneys were well represented at the NY Bred Ewe sale held October 20, 2018 in Rhinebeck. White Romneys entered in the sale sold for an average of \$562.50 and Natural Colored Romneys earned a \$300 sale average. Top selling Romney was a spring ewe lamb from Winding Wicks Farm, Hromis Family, that sold to Taylor Young, TN for \$700. Other consignors included Pitchfork Ranch, Cindy Cieciwa; Smiling Sheep Farm, Chapin Family; and Uphill Farm, Helena Kagan.

Northeast Regional Romney Show—BigE

Exhibitors at the District 1 Regional Show, held during the Big E in West Springfield, MA included Catherine Hromis, Little Hooves Romneys, Emma Rogers, Megan Higgins, Courtney Lyman, Hayley Hares, Megan Dion, Teresa Hromis, Cadence Higgins and Jill Morton.

Top honors in the white show went to Catherine Hromis, Champion Ram; Megan Higgins, Reserve Champion Ram; Emma Rogers, Champion Ewe; Little Hooves Romneys, Reserve Champion Ewe. Best fleeced was shown by Little Hooves and Best headed award went to Catherin Hromis.

The Natural Colored show winner was Teresa Hromis, Champion Ram and Reserve Champion Ram, Champion Ewe and Reserve Champion Ewe. Best fleeced colored Romney was shown by Cadence Higgins and the Best headed animal award went to Courtney Lyman.

Premier Breeder in the white show was Little Hooves Romneys and in the natural colored division the honor went to Teresa Hromis.

Congratulations to all and thank you for promoting Romneys at the Big E.



1912 - 2012 : "100 Years of Serving the Romney Breeders of America"

American Romney Breeders Association

www.americanromney.org



Junior members at NAILE: Top Left and Clockwise
Caitlin & Ethan Plank, Catherine & Teresa Hromis; Ava Jo Hayes;
Madison Feehan; Caitlin & Ethan Plank; Caitlin Plank; Courtney
Lyman. Show results listed on page 9.



Greetings everyone from Auburn, New York! My name is Hayley Hares, and this is my second year owning and showing Romney sheep. I got my first two Romneys last summer from a friend of mine, Phebe Alley, and well, ever since then they are like potato chips, you can't just have two! Being raised on a dairy farm my whole life, I showed cows, and have been for eight plus years. When I told my dad I wanted to show sheep he literally thought I was nuts, as he isn't a sheep person, and enjoys cows.

The first show I took my two Romneys to was my New York State Fair, and yes, I had no idea what I was doing! I noticed in the sheep world though that people are so nice and willing to help one another out.

After the fair, I got looking into more farms with Romneys and that's when I found two great breeders, Charlene Carlisle and Ethan Kennedy. Purchasing one from Charlene and two from Ethan, I'm up to four Romneys so far.

This summer and fall I did more shows, and with the help from Ethan at the New York State Fair, and help from both Charlene and Ethan at the Big E, I've learned so much! I appreciate their help so much. They have been so nice and friendly to my mom and me.

I've met some nice people in the sheep showing world, and because of just how friendly and helpful they are I've really enjoyed showing Romneys. I'm looking forward to meeting new people and continue showing sheep. Already looking forward to the 2019 showing.

Submitted to Banner Magazine and posted on the ARBA website.

Harvest of U.S. Lambs

Seasonality of lamb production is an issue that causes inefficiencies and market volatility in the U.S. lamb industry. Each sector of the industry should consider management alterations to better supply a more consistently available product.

An estimated 80% of the U.S. lamb crop is born in the first five months of the calendar year. Sheep are seasonal breeders and fertility is highest from September through December, resulting in late winter and spring born lambs. The combination of seasonal constraints on reproduction and a lower availability of inexpensive feed resources means it is relatively uncommon for lambs to be born other times of the year in the U.S. There are, however, a relatively small number of flocks that do specialize in either fall or year-round production and have evolved the genetic background, as well as both reproductive and nutritional management of their flocks, to be able to do this efficiently.

The lamb packing industry prefers a supply of year-round lamb to serve its clientele. To understand when shortages of lamb occur, it is essential to know the general markets for lamb. The U.S. lamb industry can be categorized into two sectors: traditional and nontraditional markets.

The traditional market prefers a larger and fatter lamb that weighs 120 to 160 pounds live weight, which most commonly takes 8 to 14 months from birth to harvest. This places most late winter and spring lambs at the processor between November and June.

The nontraditional market prefers lighter and leaner lambs, with the highest volume entering the market at 50 to 90 pounds during the months of April through October, and bringing a premium price for special holidays.

National Council of Textile Organizations Evaluate Trade Agreement

"The U.S. textile industry is pleased the United States, Mexico and Canada have reached an agreement to replace NAFTA because Canada and Mexico are its largest trading partners," said National Council of Textile Organizations president and CEO Auggie Tantillo as he noted that products from the textile and apparel supply chain accounted for nearly \$12 billion in U.S. exports to Canada and Mexico in 2017.

"Unlike the original NAFTA, the new agreement includes a separate textile and apparel chapter. This outcome is a tangible recognition by all three parties of the importance of textile manufacturing to the regional economy." Tantillo added as he explained that NCTO would not be making any further comment with respect to the deal until the substance of the agreement could be carefully analyzed by NCTO.

U.S. employment in the textile supply chain was 550,500 in 2017. The value of shipments for U.S. textiles and apparel was \$777.9 billion in 2017. U.S. exports of fiber, textiles and apparel were \$28.6 billion in 2017.

It is the time of year that establishes what the rest of the year will produce. Will the ewe flock produce a healthy lamb crop, will the ewes do well and provide adequate milk to raise healthy lambs and will the lambs be free of illness and injury? If all goes as planned the results will be as hoped. If you have spent time at the computer determining feed costs, veterinary supplies and services, shearing fees and equipment needs.

Having the ewes prepped is important. Vaccination schedules help protect ewes and unborn lambs, and vary with the climate and common diseases impacting sheep. The greatest loss prior to delivery of healthy lambs is an abortion or group of abortions. Some may be prevented with vaccines, others may be created from stress due to management, predators or weather. Increasing the feed for ewes during the month prior to delivery can have very positive results, both during delivery of lambs and in the production of milk to keep lambs growing. Changes may be rotation to fresh pasture, additional high quality hay, adding high energy grain, or a combination of all. The free choice of salt and mineral blends for your region are also critical, with selenium and iodine being very important for healthy lambing.

Attention to signs of labor can assist ewes in being successful. Separation from the flock, changes in eating and initial stages of delivery can be observed. If necessary, assistance can be given and the ewe and lambs will have an easier start. Lambs should be checked to make sure they have nursed, have a warm mouth, and have been up and about. A newborn lamb that is not up and nursing soon after birth will need to be helped, either by nursing the ewe or being fed by tube or bottle.

Ewes and lambs should be up and acting normal within hours of delivery. A ewe that is weak will not be able to respond to the nursing needs of the lamb. A lamb that is weak will not have the strength to nurse enough to become stronger. Each situation will need your assistance.

Starvation is the leading cause of death in baby lambs, followed by respiratory infections and pneumonia. Feeding is easy, and treatment for respiratory issues can be successful. Sulfa drugs and vaccinations given at birth are useful tools to reduce death by these problems. Both of these conditions need quick response, so having supplies available is important.

Another concern that happens more than anticipated is the smothering of lambs by the ewe. It may not happen when they are confined, but it can be disappointing to find a lamb that is several days old that has been smothered when it is rolled on by the ewe. This can be reduced by having the ewes shorn prior to lambing, but even that is not always a guarantee of success.

When all goes well, the year will be productive. When several issues interfere with a successful lambing, the enthusiasm for the future may not be as great. Whether raising a crop of lambs for the feedlot or hoping to have a few show quality lambs to enter in fairs and festivals, getting a good start in the lambing barn is critical.

Contract Grazing

Using sheep to clean public and private lands is not new, but it is a growing business. Orchards and vineyards have been in the business of hiring sheep to graze and that concept is moving forward.

Basilica of St. Patrick's Old Cathedral on Mulberry Street in Manhattan, New York City, has hosted a small flock of sheep as a sustainable way of mowing the grass in the cathedral grounds by grazing, eliminating the need for loud gasoline-powered mowers. The sheep also provide a natural fertilizer rather than chemical-laden fertilizers and weed-killers.

A cathedral statement says sheep in the city promote beauty and well-being by amplifying the historic atmosphere of the church and grounds established in 1815, and provide a peaceful respite from the busy-ness and chaos of city living.

Universal Foot Rot Vaccine

Australian researchers say they are five steps closer to developing a new foot rot vaccine. Foot rot is an infectious and contagious disease caused by bacteria. An outbreak of foot rot may involve one or several of the bacterial strains.

In a research project between Monash University and the University of Sydney, reverse vaccinology, an approach successfully applied in human medicine, was employed to identify five potential foot rot vaccine antigen candidates.

Proteins were purified using high-throughput technology and tested in pen-and-field vaccination trials for their ability to protect sheep against foot rot.

Having identified five potential vaccine antigen candidate, the research team plans to move on to the next step shortly, with further testing and refining of vaccine formulations.


Eagle Talon Enterprises, L.L.C.

LIVESTOCK DIAGNOSTIC LABORATORY

Testing Services for cattle, sheep, goats, bison, llamas
 Pregnancy BVD Johne's CL CAE/OPP

www.eagletalonent.com

544 Dutton Creek Rd. (307) 742-9072
 Laramie, WY 82070 Tanya@eagletalonent.com

Kalina Family

Registered Romney and Shropshire Sheep

Sue Kalina ~ 503-939-0303
skalina26@gmail.com
 Stephanie and Jacy Booren ~ 503-476-5449
 Bessie Kalina ~ 541-928-9865

Junior member Romney breeders took top honors in several showmanship classes. Cadence Higgins placed first in the junior division, Megan Higgins took top place in the intermediate class and Catherine Hromis finished in third position. Teresa Hromis finished third in the senior division. More placings from the Big E are included in the District 1 report on pages 3 and 11. Provided by Emma Rogers.



Ewe Lamb Raffle Winner

Congratulations to Terry Mendenhall of the Mendenhall Wool ranch in Loma Rica, California for purchasing the winning raffle ticket. The Raffle prize was a spring born white ewe lamb donated by Little Hooves Romneys.

The drawing was held at BigE in September during the Regional Romney Show. All proceeds go to sponsor Romney junior members at the All American Youth Show and the North American International Livestock Exposition.

Many thanks to all who purchased and/or sold tickets, without your help this project would never have been so successful.

Initially, the total was \$5,425 but after the drawing had been held, an additional \$100 was donated by a non-Romney sheep breeder who expressed a desire to support our association youth, bringing our total sales to \$5,525. Our future looks bright!



southern Oregon Romneys



JoAnn Mast & Kathleen Zappelli
58221 Lee Valley Road, Coquille, OR 97423
541-572-3094 (home) 541-290-2103 (cell)

soromney@wildblue.net

southernoregonromneysonline.com